



***WANSTEAD
BUTTERFLIES
AND MOTHS
2024***

Wren Wildlife and Conservation Group

WANSTEAD BUTTERFLIES AND MOTHS 2024

There is a long tradition of observing and recording butterflies and moths (Lepidoptera) in the area around Wanstead Flats and Wanstead Park ('the patch'). Colin Plant and others used light-traps in the early 1980s. More recently, Paul Ferris revived interest from 2005, using a light-trap in the garden of his house in Capel Road. In the autumn of 2011, I began regular trapping in my garden at Belgrave Road, and Tom Casey and James Heal have both used light-traps regularly in Overton Drive and Barclay Road respectively. We have also run traps in Bush Wood and Wanstead Park. In 2024, a mixture of actinic and MV traps were used in every month of the year, with Tom being the most regular. But that is not the full story: observation has involved a much larger team of local naturalists – too many to list here. Long may this continue!

Weather

The headlines will say that 2024 was the fourth-warmest year on record in the UK, but at crucial times for butterflies and moths, conditions were inclement. April was wet, dull and unsettled, and this pattern persisted into May. While June was a drier month, it was also cooler than average, with northerly winds dominating for the first fortnight. The first half of July was also cooler than average, though the last two weeks and the first half of August had hot, dry spells. Unsettled weather, with some periods of heavy rain, returned in the second half of the month. The often poor weather undoubtedly impacted our Lepidoptera, although it is hard to know what other factors were responsible for depressing numbers of many species, especially butterflies.

Highlights

Despite the weather, the total number of species recorded in 2024 was the second highest on record, 366. This was only surpassed by the 375 seen in 2020. That headline figure masks that fact that *numbers* of many species were down. This was true of butterflies generally, as demonstrated by the data collected on the new Wanstead Park transect, but also for a range of moths. Some expected species – Rustic (*Hoplodrina blanda*), for example – were not recorded at all.

Despite this, it was an extraordinary year in terms of quality. There was much to celebrate, including the addition of an impressive 30 species to the patch list. These include Light Crimson Underwing (*Catocala promissa*, the 4th record for Essex), and the first records for south-west Essex of Great Prominent (*Peridea anceps*) and Waved Black (*Parascotia fuliginaria*). Also new were Pine Carpet (*Pennithera firmata*), Maple Pug (*Eupithecia inturbata*), August Thorn (*Ennomos quercinaria*) plus the 7th and 8th Essex records of Crescent Dart (*Agrotis trux*). Add to these the caterpillars of Scarce Umber (*Agriopsis aurantiaria*) and Mullein Moth (*Cucullia verbasci*) – neither recorded as adults locally – and 22 new micromoths, including the third Essex records of Gold Cloak (*Phtheochroa schreibersiana*) and Rufous Pearl (*Udea fulvalis*), plus Yellow-headed Spring Jewel (*Eriocrania salopiella*), Maple Snout (*Anarsia innoxella*), and Marbled Fern (*Musotima nitidalis*) ... and 2024 was certainly a year to remember.

Of course, it's not only about rare records. Our varied matrix of grassland, scrub, woodland, freshwater, and leafy gardens provides food and shelter for a great range of commoner species, all crucial pieces in the jigsaw puzzle that makes up our local ecosystems. And we should never take even the most common for granted; the environment is changing so rapidly at present – mostly for the worst – that we should treasure them all.

Tim Harris

Note: in the pages that follow, for each species there is a brief description of the Essex and patch status of each; the range of dates it has been recorded locally; and a summary of 2024 records in **bold**. It is impossible to identify some moths to species level without genital determination and in these instances the suffix 'agg' is used. References to Overton Drive, Belgrave Road, and Barclay Road refer to the garden light-traps run by Tom, Tim, and James. All pics: Tim Harris.

BUTTERFLIES (26)

57.005 Essex Skipper *Thymelicus lineola*

Essex: 58 hectads post 1991. Patch: usually numerous in grasslands, 9 June-13 July. Royston Meadow is easily the best site locally.

2024: Royston Meadow: 23 June (many); Old Sewage Works (OSW): 13 July (2). A poor year locally.

Wanstead Park transect (this species and next): 24 June-17 July (42)

57.006 Small Skipper *Thymelicus sylvestris*

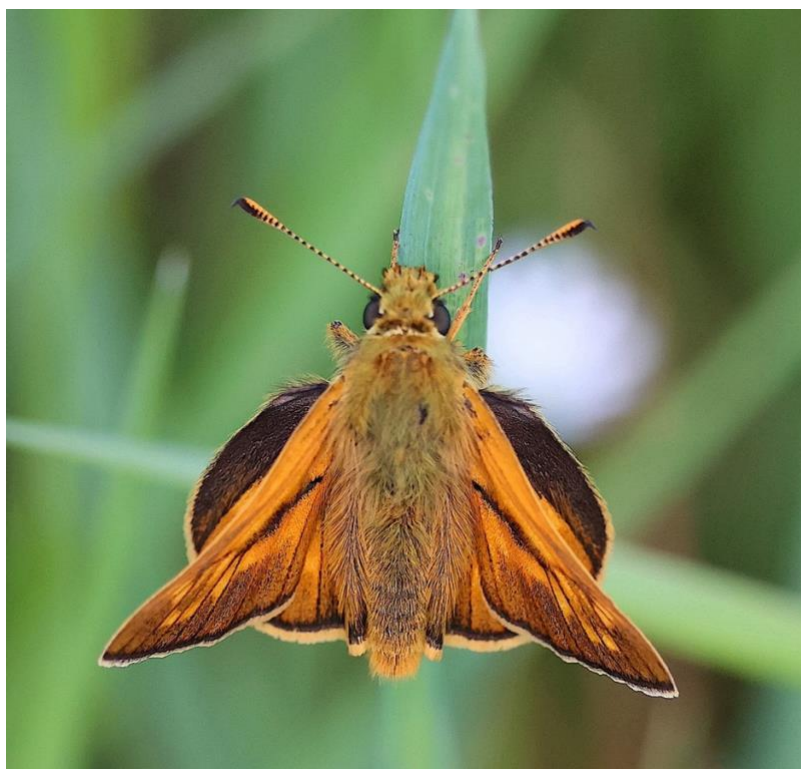
Essex: 59 hectads. Patch: usually numerous in grasslands, 13 June-13 July. Royston Meadow is easily the best site locally.

Royston Meadow: 16 June; 23 June (many). A poor year locally.

57.009 Large Skipper *Ochlodes sylvanus*

Essex: 59 hectads. Patch: regular in small numbers around grasslands, 30 May-22 June.

Royston Meadow: 8 June (2). A poor year locally.



58.003 Orange-tip *Anthocharis cardamines*

Essex: 59 hectads. Patch: regular in small numbers, 3 Apr-5 June.

Wanstead Park: 7-12 April (m); OSW: 10 April (m), 26 April; Long Wood, Wanstead Flats: 14 April

58.006 Large White *Pieris brassicae*

Essex: 60 hectads. Patch: regular in small numbers, 15 Apr-1 Oct.

WF: 9 May. Under-recorded.

Wanstead Park transect: 24 June-12 August (7)

58.007 Small White *Pieris rapae*

Essex: 58 hectads. Patch: regular in small numbers, 21 Mar-6 Oct.

Pastures garden: 30 March; Wanstead Flats: 8 April-17 October; OSW: 10-12 April;

Wanstead Park transect: 13 May-16 September (19)

58.008 Green-veined White *Pieris napi*

Essex: 58 hectads. Patch: regular in small numbers, 8 Apr-9 Oct.

Bush Wood: 11 May; Old Sewage Works: 17 May

Wanstead Park transect: 13 May-16 September (35)

58.013 Brimstone *Gonepteryx rhamni*

Essex: 59 hectads. Patch: regular in small numbers, 15 Feb-7 May; 20 June

Wanstead Park: 15 February, 30 March (SoM on both dates), 6 April (Bush Wood), 12-13 April;

Wanstead Flats: 20 March-7 May

59.003 Speckled Wood *Pararge aegeria*

Essex: 59 hectads. Patch: common in several overlapping generations in wooded areas, 12 Mar-13 Nov.

Wanstead Park: 30 March-13 November (Geoff); Wanstead Flats: 26 August (c10), 24 October

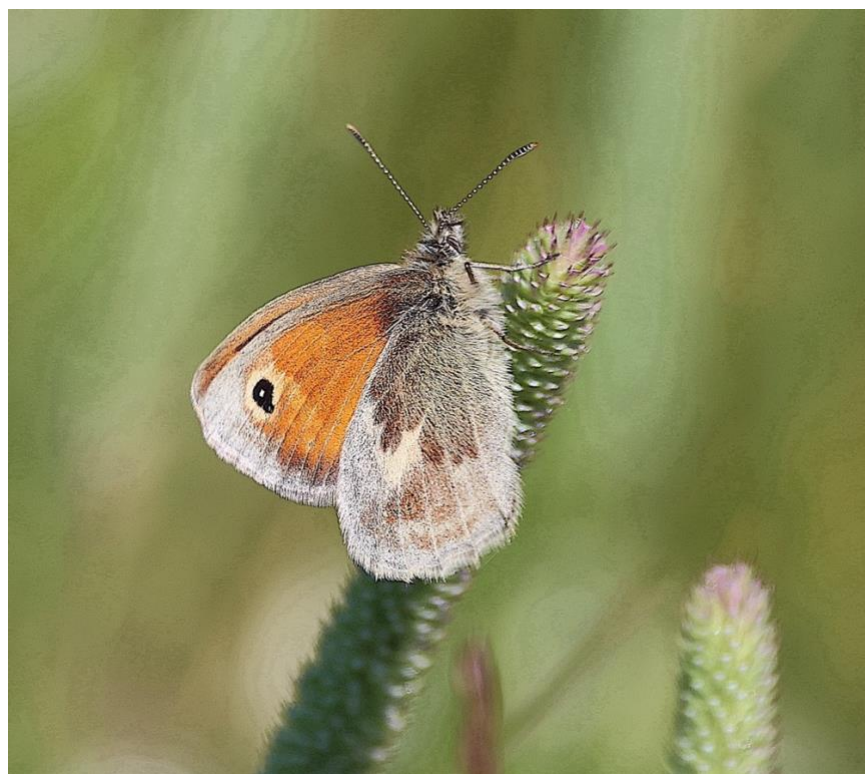
Wanstead Park transect: 27 May-9 September (15)

59.005 Small Heath *Coenonympha pamphilus*

Essex: RDB species, 57 hectads. Patch: regular in small numbers, two generations, 7 May-26 June; 13 Aug-24 Oct.

Wanstead Flats: 20 May-2 June; 26 August-24 October; Royston Meadow: 23 June (17)

Wanstead Park transect: 27 May (1)



59.009 Ringlet *Aphantopus hyperantus*

Essex: 57 hectads. Patch: first recorded on 20 July 2013. Thereafter, regular in small numbers at woodland edge and scrub, 17 June-17 July, but none seen in 2023 and only 2 in 2024.

Wanstead Park transect: 15 July (2).

59.010 Meadow Brown *Maniola jurtina*

Essex: 60 hectads. Patch: common in all grassland areas, with wanderers in gardens, 11 June-25 Aug

Royston Meadows: 16 June; Davies Lane scrub, Wanstead Flats: 25 August

Wanstead Park transect: 24 June-26 August (40)

59.011 Gatekeeper *Pyronia tithonus*

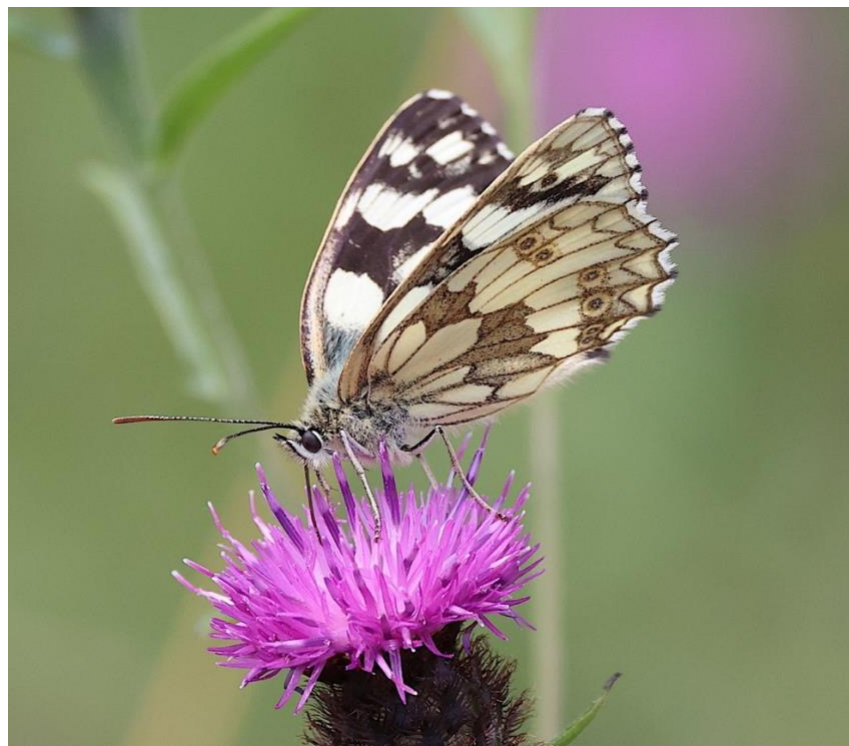
Essex: 60 hectads. Patch: numerous in woodland edge and scrub habitats, 1 July->

Wanstead Park transect: 8 July-19 August (100)

59.012 Marbled White *Melanargia galathea*

Essex: 54 hectads. Patch: regular in small numbers, especially around knapweed, 17 June-17 July. First recorded on 4 July 2011. Royston Meadow is easily the best site locally.

Wanstead Flats: 20 June; Royston Meadow: 23 June (15)



59.023 Red Admiral *Vanessa atalanta*

Essex: 60 hectads. Patch: regular in small numbers, 28 Jan-23 Dec

Wanstead Park: 15 February (Whiskers Is); Wanstead Flats: 17-24 October

59.024 Painted Lady *Vanessa cardui*

Essex: 59 hectads. Patch: irregular, depending on whether it is an invasion year, 4 May-17 Sept.

Best count: 9 on Wanstead Flats, 23 June 2019.

Wanstead Park: 8 July, 26 July; Wanstead Flats: 13 September

59.026 Peacock *Aglais io*

Essex: 58 hectads. Patch: regular in small numbers, 17 Feb->

Wanstead Park: 20 March (first); OSW: 10-12 April

Wanstead Park transect: 13 May-22 July (5)

59.027 Small Tortoiseshell *Aglais urticae*

Essex: 61 hectads. Patch: regular in small numbers, 25 Feb->

Wanstead Flats: 21 March-5 April; OSW: 29 March. A very poor year.

59.031 Comma *Polygona c-album*

Essex: 61 hectads. Patch: regular in small numbers, 25 Feb-1 Oct.

Wanstead Flats: 5 April-25 August; Wanstead Park: 12 April-16 June

Wanstead Park transect: 22 July (1)

61.001 Small Copper *Lycaena phlaeas*

Essex: 57 hectads. Patch: regular in small numbers in grassland, in two or three generations, 14 Apr-18 June; 1 July-6 November.

Wanstead Flats: 7 May-25 August (including SSSI, 16-18 July)

Wanstead Park transect: 6 May, 22-29 June (3)



61.004 Purple Hairstreak *Favonius quercus*

Essex: 52 hectads. Patch: regular in small numbers, especially around oak, 15 June-25 Aug.

Wanstead Park: 26 June-27 July

61.005 Green Hairstreak *Caliothrys rubi*

Essex: 33 hectads. Patch: first seen on 27 May 2013. Now regular in small or larger numbers around Long Wood and elsewhere, 12 Apr-14 June.

Wanstead Park: 12-17 April; Long Wood, Wanstead Flats: 13 April-9 May

Selected counts at Long Wood:

14 April: 33

7 May: 27

9 May: 24

Wanstead Park transect: 6-13 May (3)



61.008 Long-tailed Blue

Patch: only one previous record, 14 Sept 2019 in Makepeace Rd, Wanstead. The provenance of this record and that in 2024 are unknown.

Elmcroft Ave, Wanstead: 28 September (Geoff)

61.012 Holly Blue *Celastrina argiolus*

Essex: 58 hectads. Patch: common in woodland, scrub and gardens, 30 Mar-18 Sept.

Pastures garden: 30 March; Long Wood: 14 April-2 June

Wanstead Park transect: 6 May-16 September (14)

61.015 Brown Argus *Aricia agestis*

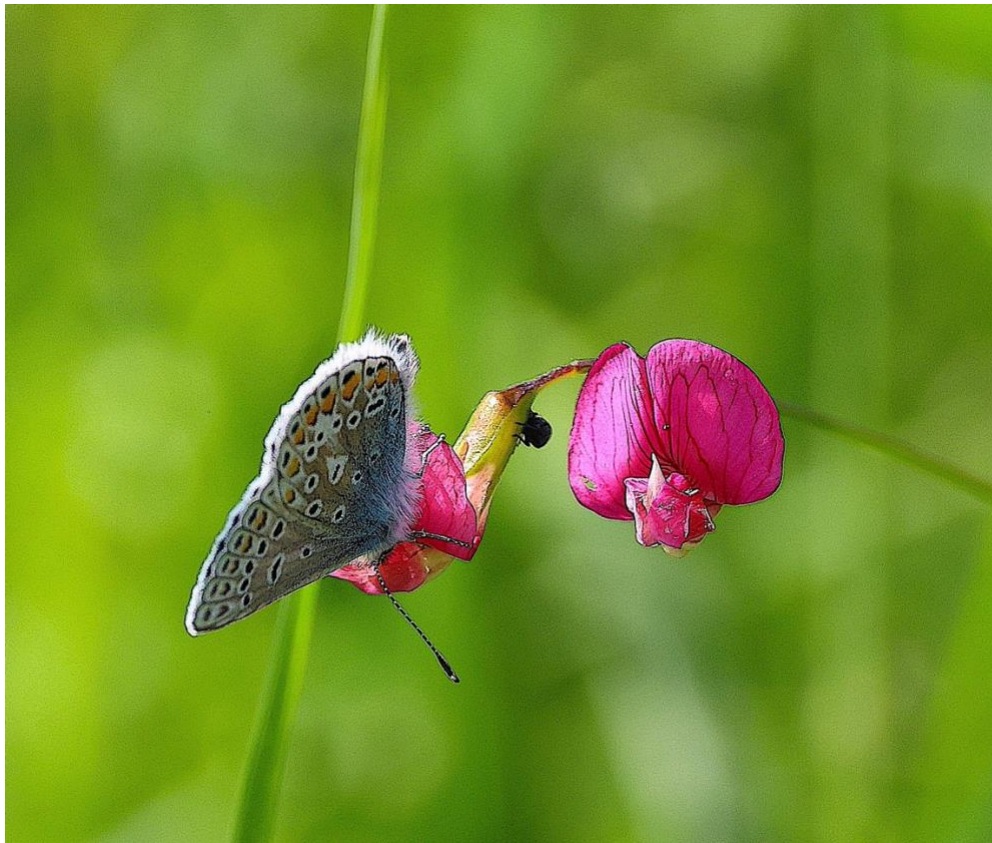
Essex: 57 hectads. Patch: scarce in grassland in two generations, 12 May-10 June; 11 July-1 Oct.

Wanstead Flats: 26 August (anon, X). **Photo** verification received.

61.018 Common Blue *Polyommatus icarus*

Essex: 58 hectads. Patch: regular in small numbers in grassland in small numbers, 8 May-23 June; 10 July-9 Oct.

Pastures garden: 26 May (Marion Lobo); **OSW: 2-23 June (3); Wanstead Flats: 7 September (1).**



LARGER MOTHS (189)

3.001 Orange Swift *Triodia sylvina*

Essex: 54 hectads. Patch: scarce, 5 records 2012-24; 20 Aug-1 Sept.

Overton Drive: 27 August. **Photo** verification received.

3.002 Common Swift *Korscheltellus lupulina*

Essex: 55 hectads. Patch: Regular in small numbers, 23 records, 2012-24; 19 May-7 Aug.

Overton Drive: 28 May; Belgrave Rd: 29 May (2)

50.002 Leopard Moth *Zeuzera pyrina*

Essex: 50 hectads. Patch: scarce, 7 records 2015-24; 26 June-3 Aug.

Belgrave Rd: 18 July

52.002 Hornet Moth *Sesia apiformis*

Essex: **RDB**. Patch: scarce, 3 records, 2017-24; 31 May-16 June. Larval holes in Black Poplar hybrid, Bushwood, 2021.

SoM: 16 June (Andy)

52.012 Yellow-legged Clearwing *Synanthedon vespiformis*

Essex **RDB**. Patch: scarce, 4 records, 2015-24; 2 June-30 July. All attracted to lures.

Overton Drive: 2 June (lure). **Photo** verification received.

54.008 Six-spot Burnet *Zygaena filipendulae*

Essex: 56 hectads. Patch: regular in small numbers in grassland areas including Wanstead Flats, The Glade, and Royston Meadow, 2013; 19 June-19 July

Royston Meadow: 23 June (4)

65.002 Oak Hook-tip *Watsonalla binaria*

Essex: 51 hectads. Patch: regular in small numbers in two generations, 30 Apr-24 May; 11 July-20 Sept

Belgrave Rd: 8-18 May (4, m); 16 July-7 September (11, inc 3 on 7/9). **Photo** verification received.



65.005 Pebble Hook-tip *Drepana falcataria*

Essex: 47 hectads. Patch: scarce, 4 records, 2013-24; 9 July-26 Aug
Belgrave Rd: 18 July. **Photo** verification received.



65.009 Buff Arches *Habrosyne pyritoides*

Essex: 48 hectads. Patch: regular in small numbers; 13 records, 11 June-24 July.
Warren Wood/Temple: 21 June; Belgrave Rd: 29 June. **Photo** verification received.



65.010 Figure of Eighty *Tethea ocularis*

Essex: 50 hectads. Patch: scarce, 5 records 2015-20; 9 May-11 June
Overton Drive: 9 May. **Photo** verification received.



65.015 Frosted Green *Polyphoca ridens*

Essex: 43 hectads. Patch: scarce, 3 records 2014-24: 26 Mar-13 April
Overton Drive: 26 March, 10 April. **Photo** verification received.

66.001 December Moth *Poecilocampa populi*

Essex: 44 hectads. Patch: scarce, 6 records 2015-20: 17 Nov-6 Dec. The first larvae on patch found in 2024.
Long Wood, Wanstead Flats: 2 May (larva)

69.001 Lime Hawk-moth *Mimas tiliae*

Essex: 49 hectads. Patch: regular in small numbers 2013-24; 18 Apr-12 June
Belgrave Road: 12 June



69.004 Convolvulus Hawk-moth *Agrius convolvuli*

Essex: 40 hectads. Patch: scarce, 3 records 2006-24; 9 Sept-22 Oct

Warren Drive: 9 September (Paul Bonnell)

69.016 Elephant Hawk-moth *Deilephila elpenor*

Essex: 54 hectads. Patch: regular in small numbers 2005-24; 16 June-16 July. Larvae also found (2019).

Belgrave Road: 29 June. [Photo](#) verification received.



69.017 Small Elephant Hawk-moth *Deilephila porcellus*

Essex: 45 hectads. Patch: regular in small numbers, 2013-24; 21 May-13 July

Belgrave Road: 17 June

70.004 Least Carpet *Idaea rusticata*

Essex: 55 hectads. Patch: common, 2005-24, usually in two generations, 26 May-16 Aug; 28 Aug-6 Oct. More numerous in first generation, notably 133 in 2020 (Belgrave).

Overton Drive: 20 June; Belgrave Road: 29 June-10 August (60, inc 21 on 18/7).

[Photo](#) verification received.

70.006 Dwarf Cream Wave *Idaea fuscovenosa*

Essex: 53 hectads. Patch: common, in one generation, 2005-24, 12 June-26 July, with 28 in 2019 (Belgrave).
Belgrave Road: 29 June-18 July (13). **Photo** verification received.

70.008 Small Dusty Wave *Idaea seriata*

Essex: 51 hectads. Patch: common, in two generations, 2005-24: 2 May-8 July, 31 July-16 September.
Best year: 82 (45;37) in 2019 (Belgrave).
Barclay Rd: 2 May; Belgrave Road: 18 May-17 June (3); 25 August (2nd generation)

70.009 Satin Wave *Idaea subsericeata*

Essex: 43 hectads. Patch: regular in small numbers, sometimes two generations, 14 May-1 July, 3 Aug-14 Sept.
Belgrave Road: 14 May-17 June (6); 12 August. **Photo** verification received.



70.011 Single-dotted Wave *Idaea dimidiata*

Essex: 52 hectads. Patch: regular in small numbers in one generation, 2005-24: 26 May-21 Aug
Belgrave Road: 18-27 July (2)

70.012 Treble Brown Spot *Idaea trigeminata*

Essex: 51 hectads. Patch: regular in small numbers, sometimes in two generations, 2005-24: 21 May-17 July, 15-21 Sept.
Belgrave Road: 2-29 June (5). **Photo** verification received.



70.013 Small Fan-footed Wave *Idaea biselata*

Essex: 51 hectads. Patch: regular in small numbers, once in two generations, 2012-24: 17 June-12 Aug; 23 Oct
The Temple, Wanstead Park: 21 June; LH: 29 June (1)

70.016 Riband Wave *Idaea aversata*

Essex: 57 hectads. Patch: common, in two apparently overlapping generations, 2002-24: 28 May-14 Sept.
Best year: 180 in 2019 (Belgrave Rd)

Belgrave Road: 2 June-10 August (88, inc 22 on 18/7)

70.029 Blood-vein *Timandra comae*

Essex: 55 hectads. Patch: regular in small numbers, 2004-24, 27 May-7 Sept

Belgrave Road: 16 July



70.036 Maiden's Blush *Cyclophora punctaria*

Essex: 48 hectads. Patch: regular in small numbers in two generations, 2005-24: 22 Apr-17 June; 11 July-7 Sept. Best year: 13 (9; 4) in 2022 (Belgrave Rd).

Overton Drive: 8 May; Belgrave Road: 21 July-7 September (7, 2nd generation, inc 3 on 7/9)



70.049 Garden Carpet *Xanthorhoe fluctuata*

Essex: 55 hectads. Patch: common, sometimes in three probably overlapping generations, 2005-24: 23 Apr-11 July, 9 Aug-21 Sept, 27 Oct-21 Nov. Best year: 47 (27;19;1) 2021 (Belgrave Rd).

Belgrave Road: 23 April-29 June (10); 16 July (2)

70.059 Yellow Shell *Camptogramma bilineata*

Essex: 59 hectads. Patch: common, in overlapping generations (?), 2005-24, 26 May-7 Oct. Often disturbed by day and attracted to light, with 28 at latter in 2019.

OSW, Wanstead Park: 8 June; Belgrave Road: 3-7 September (4)

70.061 Common Carpet *Epirrhoe alternata*

Essex: 55 hectads. Patch: common, in two generations, 2006-24: 10 Apr-7 June; 12 July-9 Sept. Not as common as Garden Carpet. Best years: 7 (2; 5) in 2020 and 7 (2; 5) in 2021.

OSW: 10 April-8 May; Belgrave Road: 12 April; 12 July-7 September (6). Photo verification received.

70.077 Pine Carpet *Pennithera firmata*

Essex: 28 hectads (187 records).

Belgrave Road: 29 June. Photo verification received. The first record for the patch.



70.079 Spruce Carpet *Thera britannica*

Essex: 43 hectads. Patch: regular in small numbers in two generations, 2012-24: 22 Apr-27 June, 7 Sept-9 Nov.

Belgrave Road: 15 May

70.083 Cypress Carpet *Thera cypressata*

Essex: 36 hectads. Patch: regular in small numbers, two generations, 2012-24: 14 May-23 June; 28 Sept-20 Nov

Belgrave Road: 18 May-12 June (3); 29 October-2 November (3). Photo verification received.

70.095 Red-green Carpet *Chloroclysta siterata*

Essex: 48 hectads. Patch: regular in small numbers, two generations, 2012-24, 16 Mar-15 May; 15 Sept-21 Nov.

Overton Drive: 10 April; Belgrave Road: 4-27 October (3)

70.097 Common Marbled Carpet *Dysstroma truncata*

Essex: 52 hectads. Patch: regular, usually only in small numbers in two generations, 2005-24, 2 May-18 July; 29 Aug-15 Nov. Best year: 23 in 2022 (Belgrave Rd).

Belgrave Road: 8 May-18 July (8); 22 October-2 November (2). Photo verification received.

70.106 Winter Moth *Operophtera brumata*

Essex: 50 hectads. Patch: scarce, 11 records 2017-24: 24 Oct-17 Feb, plus 4 flightless females.
Overton Drive: 2 January. **Photo** verification received.

70.107-70.109 November Moth agg *Epirrita* species

Essex: 44 hectads. Patch: regular in small numbers, 2005-24: 16 Oct-18 Nov.
Belgrave Road: 31 October (2). **Photo** verification received.

70.141 Double-striped Pug *Gymnoscelis rufifasciata*

Essex: 52 hectads. Patch: common, in at least three overlapping generations, 2012-24: 2 Feb-19 Nov. Best year: 213+ in 2019 (Belgrave Rd).

Overton Drive: 8 March; Belgrave Road: 17 March-29 May (29, inc 6 on 7 April); 29 June-2 November (28, 2nd generation)

70.144 Green Pug *Pasiphila rectangulata*

Essex: 52 hectads. Patch: regular in small numbers, 2005-14, 14 May-8 July.
Belgrave Road: 2-29 June (3). **Photo** verification received.



70.147 Slender Pug *Eupithecia tenuiata*

Essex: 37 hectads. Patch: scarce, 4 records, 2019-24, 19 May-22 July.
Belgrave Road: 29 June. **Photo** verification received.

70.148 Maple Pug *Eupithecia inturbata*

Essex: RDB species.

Belgrave Road: 27 July (2). **Photo** verification received. The first record for the patch.



70.151 Foxglove Pug *Eupithecia pulchellata*

Essex: 40 hectads. Patch: regular in small numbers, 2005-24: 3 Apr-25 Aug

Overton Drive: 22 June; Belgrave Road: 29 June

70.156 Brindled Pug *Eupithecia abbreviata*

Essex: 47 hectads. Patch: regular in small numbers, 2005-24: 24 Feb-14 May. The *hirschkei* form recorded in 2019 and 2020.

Overton Drive: 12 March; Belgrave Road: 17 March-11 April (9)

70.157 Oak Tree Pug *Eupithecia dodoneata*

Essex: 45 hectads. Patch: regular in small numbers, 2005-24: 7 Apr-24 May.

Belgrave Road: 7 April-12 May (3). **Photo** verification received.



70.159 Cypress Pug *Eupithecia phoeniceata*

Essex: 34 hectads. Patch: scarce, 13 records, 2019-24, 14 Aug-21 Sept

Belgrave Road: 25 August-16 September (3)

70.166 Plain Pug *Eupithecia simplicata*

Essex: 41 hectads. Patch: scarce, 8 records, 2013-24: 23 July-15 Aug

Belgrave Road: 27 July. **Photo** verification received.

70.173 Lime-speck Pug *Eupithecia centaureata*

Essex: 54 hectads. Patch: regular in small numbers, possibly in two overlapping generations, 2005-24: 22 Apr-4 Sept. Best year: 24 in 2020.

Overton Drive: 11 May; Belgrave Road: 26 May-7 September (11). **Photo** verification received.

70.183 Common Pug *Eupithecia vulgata*

Essex: 51 hectads. Patch: common, 2006-24: 21 Apr-25 July. Best year: 42 in 2020 (Belgrave).

Belgrave Road: 8 May-17 June (10). **Photo** verification received.

70.186 Yarrow Pug *Eupithecia millefoliata*

Essex: **RDB** species. Patch: probably under-recorded; may be disturbed from grass but only attracted to light-traps twice: 15 July 2022, 17 July 2024.

Overton Drive: 17 July. **Photo** verification received.

70.187 Tawny Speckled Pug *Eupithecia icterata*

Essex: 54 hectads. Patch: scarce, 4 records, 2012-24: 13-25 Aug

Belgrave Road: 25 August

70.195 Streak *Chesias legatella*

Essex: 25 hectads. Patch: regular in small numbers, 2005-24: 27 Oct-8 Nov. Sometimes disturbed by day.

Belgrave Road: 31 October. Wanstead Flats: 16 November. **Photo** verification received.



70.196 Broom-tip *Chesias rufata*

Essex: **RDB** species (63 records) Patch: scarce, 11 records in 2013-15 and 2022-24: 21 Mar-23 Jun. Presumably unrecorded 2016-21 because of extensive clearance of Broom. The most important site in Essex for the species.

Overton Drive: 21 March; Belgrave Road: 29 March-22 April (5). **Photo** verification received.



70.198 Seraphim *Lobophora halterata*

Essex: 40 hectads. Patch: scarce, 10 records 2011-24: 12 Apr-28 May

Overton Drive: 12-14 April (2); Belgrave Road: 16 April. **Photo** verification received.

70.200 Yellow-barred Brindle *Acasis viretata*

Essex: 40 hectads. Patch: regular in small numbers in two generations, 2013-24: 13 Apr-13 June; 14 Aug-14 Sept.

Belgrave Road: 18 May

70.207 Clouded Border *Lomaspilis marginata*

Essex: 53 hectads. Patch: scarce, 7 records, 2016-24: 10 May-29 June

Warren Wood: 21 June

70.214 Tawny-barred Angle *Macaria liturata*

Essex: 38 hectads. Patch: scarce, 3 records, 2019, 2024: 15-29 August

Overton Drive: 15 August, 26 August. **Photo** verification received.

70.226 Brimstone *Opisthograptis luteolata*

Essex: 56 hectads. Patch: common, in two generations, 1999-2024: 11 Apr-28 May; 25 June-7 Oct. Best year: 56 (7; 49) in 2021 (Belgrave Rd).

Belgrave Road: 11 April-10 May (5); 29 June-3 September (10)

70.233 August Thorn *Ennomos quercinaria*

Essex: 27 hectads.

Belgrave Road: 27 July. **Photo** verification received. The first record for the patch.



70.235 Dusky Thorn *Ennomos fuscantaria*

Essex: 51 hectads. Patch: regular in small numbers, 2005-24, 4 Aug-20 Sept.
Overton Drive: 4 August; Belgrave Road: 25 August-7 September (2)

70.236 September Thorn *Ennomos erosaria*

Essex: 27 hectads. Patch: regular in small numbers, 2014-24, 19 June-16 Sept
Overton Drive: 19 June. **Photo** verification received.

70.241 Scalloped Oak *Crocallis elinguaris*

Essex: 27 hectads. Patch: regular in small numbers, 2005-24, 11 June-26 July. Best year: 16 in 2019 (Belgrave).
Warren Wood: 21 June; Belgrave Road: 29 June-16 July (4); Barclay Road: last date 18 July

70.244 Feathered Thorn *Colotois pennaria*

Essex: 49 hectads. Patch: regular in small numbers, 2005-24, 20 Oct-22 Nov
Overton Drive: 31 October (2). **Photo** verification received.

70.245 March Moth *Alsophila aescularia*

Essex: 47 hectads. Patch: regular in small numbers, 2012-24, 1 Feb-30 Mar
Overton Drive: 1 February; Belgrave Road: 15 February-3 March (3)

70.246 Small Brindled Beauty *Apocheima hispidaria*

Essex: 37 hectads. Patch: regular in small numbers, 2012-24, 28 Jan-15 Mar
Overton Drive: 28 January; Belgrave Road: 13 February

70.247 Pale Brindled Beauty *Phigalia pilosaria*

Essex: 47 hectads. Patch: regular in small numbers, 2012-24, 28 Jan-1 Mar
Overton Drive: 28 January, 3 February (5); Belgrave Road: 3-11 February (3)

70.248 Brindled Beauty *Lycia hirtaria*

Essex: 46 hectads. Patch: regular in small numbers, 2013-24, 14 Mar-17 April
Overton Drive: 14 March. **Photo** verification received.

70.251 Oak Beauty *Biston strataria*

Essex: 46 hectads. Patch: regular in small numbers, 2012-24, 23 Feb-16 April
Overton Drive: 24 February. **Photo** verification received.

70.252 Peppered Moth *Biston betularia*

Essex: 53 hectads. Patch: regular in small numbers, 2012-24, 22 May-27 July
Belgrave Road: 26 May-29 June (2). **Photo** verification received.



70.253 Spring Usher *Agriopis leucophaearia*

Essex: 43 hectads. Patch: regular in small numbers, 2016-24, 6 Jan-25 Feb

Overton Drive: 24 January; Belgrave Road: 18 February

70.254 Scarce Umber *Agriopis aurantiaria*

Essex: 43 hectads.

Forest Glade, Whippes X: 4 May (larva) (JH). The first record for the patch; we await our first imago!

70.256 Mottled Umber *Erannis defoliaria*

Essex: 47 hectads. Patch: scarce, 7 records, 2016-24, 17 Oct-20 Dec. Larva in Esso Copse, 17 April 2020.

LH: 24 October, 16 December. **Photo** verification received.

70.258 Willow Beauty *Peribatodes rhomboidaria*

Essex: 55 hectads. Patch: common, in several overlapping generations, 2005-24: 2 May-22 Oct.

Best year: 145 in 2021 (Belgrave Rd).

Belgrave Road: 8 May-29 June (49, inc 9 on 18/5); 27 July (v fresh)-16 October (27, inc 8 on 7/9).

Photo verification received.

70.265 Mottled Beauty *Alcis repandata*

Essex: 55 hectads. Patch: regular in small numbers, 2012-24, 10 June-6 July. 15 in Warren Wood on 23 June 2022.

Warren Wood: 21 June (3)

70.270 Engrailed *Ectropis bistortata*

Essex: 48 hectads. Patch: scarce, all 6 records from Warren Wood, 2022, 2024: 21-23 June.

Warren Wood: 21 June

70.283 Light Emerald *Campaea margaritaria*

Essex: 53 hectads. Patch: common, in two generations, 2005-24: 17 May-8 July; 11 Aug-22 Sept. Best year: 24 (9; 15) in 2019 (Belgrave Rd).

Belgrave Road: 26 May-2 June (3); 31 August-7 September (2, 2nd gen); Overton Drive: 26 May

70.297 Grass Emerald *Pseudoterpna pruinata*

Essex: 12 hectads. Patch: regular in small numbers, 2012-24, 11 June-7 Sept. Post-1990, only site in SW Essex. Simon Wood, of the 6 September: “*rather late and suggestive of a second brood*”.

Wanstead Flats: 29 August, 6 September

70.300 Blotched Emerald *Comibaena bajularia*

Essex: 48 hectads. Patch: regular in small numbers, 2007-24: 30 May-26 June.

Belgrave Road: 1-2 June (3). **Photo** verification received.



70.302 Small Emerald *Hemistola chrysoprasaria*

Essex: 47 hectads. Patch: scarce, 2 records on 14 July 2017 and 18 July 2024.

Belgrave Road: 18 July. Photo verification received.



71.001 Oak Processionary Moth *Thaumetopoea processionea*

Essex: 36 hectads. Patch: common, with nests seen at several sites. Adults attracted to light-traps, 2015-24, 24 July-7 Sept.

Wanstead Flats: 22 May (larvae); 25 August (adult); Overton Drive: 11 August (adult)

71.011 Lunar Marbled Brown *Drymonia ruficornis*

Essex: 46 hectads. Patch: regular in small numbers, 2015-24: 19 Mar-1 May

Overton Drive: 19 March, 10 April; Belgrave Road: 12 April



71.012 Iron Prominent *Notodonta dromedarius*

Essex: 50 hectads. Patch: scarce, 2 records, 8 August 2020, 12 August 2024.

Belgrave Road: 12 August



71.016 Great Prominent *Peridea anceps*

Essex: 10 hectads; only 62 previous records, this being the first for SW Essex.

Overton Drive: 14 April. Belgrave Road. Photo verification received. The first record for the patch.



71.017 Swallow Prominent *Pheosia tremula*

Essex: 50 hectads. Patch: scarce, 3 records, 2015-20, 12 April-17 May

Belgrave Road: 12 April

71.020 Pale Prominent *Pterostoma palpina*

Essex: 52 hectads. Patch: regular in small numbers, 2005-24, 22 Apr-2 Aug.

Belgrave Road: 8 May-10 May (2). Photo verification received.

71.025 Buff-tip *Phalera bucephala*

Essex: 55 hectads. Patch: regular in small numbers, 2005-24, 9 May-25 July

Overton Drive: 15 May, 19 May; Belgrave Road: 18 July (worn)



71.027 Chocolate-tip *Clostera curtula*

Essex: 50 hectads. Patch: scarce, 6 records, 2013-24, 23 Apr-5 June

Belgrave Road: 12 May. Photo verification received.



72.001 Herald *Scoliopteryx libatrix*

Essex: 47 hectads. Patch: regular in small numbers, 2005-24, 17 Mar-21 July.

Belgrave Road: 17 March

72.002 Straw Dot *Rivula sericealis*

Essex: 47 hectads. Patch: regular in small numbers in two generations, 2006-24: 21 May-1 July; 19 July-5 Sept

Overton Drive: 14 August. **Photo** verification received.

72.003 Snout *Hypena proboscidalis*

Essex: 54 hectads. Patch: regular, small numbers, 2006-24, 8 June-18 Sept. Best year: 8 in 2022 (Belgrave Rd).

Belgrave Road: 2-17 June (2)

72.011 Gypsy Moth *Lymantria dispar*

Essex: 52 hectads. Patch: regular in variable, small numbers, 2013-24: 24 June-24 Aug. Best year: 13 in 2021 (Belgrave Rd).

Overton Drive: 21 July. **Photo** verification received.

All years, Belgrave Rd:

2013: 1

2014: not recorded

2015: not recorded

2016: 1

2017: 1

2018: 1

2019: 9

2020: 5

2021: 13

2022: not recorded

2023: 10

2024: not recorded

72.020 White Ermine *Spilosoma lubricipeda*

Essex: 52 hectads. Patch: regular in small numbers, 2005-24, 13 May-1 July. Best years: 15 in 2020 and 2022 (Belgrave Rd).

Overton Drive: 30 May; Belgrave Road: 1-29 June (6). **Photo** verification received.



72.022 Muslin *Diaphora mendica*

Essex: 51 hectads. Patch: regular in small numbers, 2006-24: 29 Mar-21 July. Best year: 20 in 2020 (Belgrave Rd).

Overton Drive: 29 March; Belgrave Road: 11 April-10 May (9); SoM: 2 May (female)

72.026 Garden Tiger *Arctia caja*

Essex RDB species, 34 hectads. Patch: scarce, 3 records, 11 August 2013, 21 August 2019, 18 August 2024.

Forest Gate Station: 18 August (Rose Stevens)

72.030 Jersey Tiger *Euplagia quadripunctaria*

Essex: 51 hectads. Patch: common, 2012-24, 1 July-4 Sept. Best year: 107 in 2023 (Belgrave).

Pastures garden: 11 May (larva); Dover Road: 29 June (Joanna Leigh); Belgrave Road: 18 July-3 September (32, inc 12 on 10/8)

All years, Belgrave Rd:

2012: 18, 8-19 August

2013: details not recorded

2014: 17 July ->

2015: not recorded

2016: 3 August ->

2017: 16 July ->

2018: 12 July ->

2019: 35, 10 July-27 August; peak 9 on 22 July

2020: 99, 14 July-15 August; peak 7 on 24 July

2021: 78, 21 July-29 August; peak 22 on 14 August

2022: 31, 11 July-10 August; peak 22 on 24 July

2023: 107, 6 July-16 August; peak 25 on 9 August and 14 August

2024: 32, 18 July-3 September; peak 12 on 10 August

72.031 Cinnabar *Tyria jacobaeae*

Essex: 57 hectads. Patch: common, day flying moth, 2003-24, 26 Apr-19 June. Rarely attracted to light-trap.

Belgrave Rd: 10 May (in trap)

72.045 Common Footman *Eilema lurideola*

Essex: 54 hectads. Patch: common, 2005-24, 12 June-4 Aug. Best year: 25 in 2012. Conversely, 2024 was the poorest year in the series.

Belgrave Rd: 18 July



72.046 Scarce Footman *Eilema complana*

Essex: 53 hectads. Patch: annual in small numbers, 2005-24, 22 June-12 Aug. Best year: 18 in 2020. Conversely, 2024 was the poorest year in the series.

Belgrave Rd: 29 June-7 July (2)

72.049 Orange Footman *Eilema sororcula*

Essex: 46 hectads. Patch: annual in small numbers, 2010-24, 7 May-15 June

Overton Drive: 12 April; Belgrave Rd: 8 May-2 June (2)

72.057 Plumed Fan-foot *Pechipogo plumigeralis*

Essex: 25 hectads. Patch: scarce but apparently increasing, 10 records 2020-24; 6 July-14 Sept.

Belgrave Rd: 29 June-18 July (4), 22 October. **Photo** verification received.

72.066 Waved Black *Parascotia fuliginaria*

Essex: **RDB** species. Patch: second record for SW Essex.

Belgrave Rd: 27 July. **Photo** verification received. The first record for the patch.



72.082 Light Crimson Underwing *Catocala promissa*

Essex: very scarce, 2 hectads. Patch: first record for the patch – and south Essex – and only the county's fourth in recent years.

Overton Drive: 5 August. **Photo** verification received.

72.083 Burnet Companion *Euclidia glyphica*

Essex: 44 hectads. Patch: regular in small numbers, day flying in grassland, 11 May-13 July. Not attracted to light-trap. A poor year.

Friends Meeting House, Bush Wood: 11 May

72.084 Mother Shipton *Callistege mi*

Essex: 49 hectads. Patch: regular in small numbers, day flying in grassland, 14 May-25 June. Not attracted to light-trap. Best count: 9 at Royston Meadow, 25 June 2020. A poor year.

OSW, Wanstead Park: 17 May

73.002 Dark Spectacle *Abrostola triplasia*

Essex: 40 hectads. Patch: regular, small numbers in two generations, 2015-24: 27 May-29 June; 11 Aug-10 Oct.

Overton Drive: 31 May; Belgrave Rd: 17-29 June (2). Photo verification received.



73.012 Burnished Brass *Diachrysia chrysitis*

Essex: 55 hectads. Patch: scarce, 8 records, 2006-24, 11 June-7 Sept.

Belgrave Rd: 29 June



73.015 Silver Y

Essex: 55 hectads. Patch: regular migrant in variable numbers, 2005-24; sometimes very numerous and sometimes attracted to light, 23 Apr-15 Nov.

Belgrave Rd: 8 May-12 June (6, inc 5 on 8/5); 12-27 July (10); 31 August; WP/WF: 15-17 May (10)

73.032 Nut-tree Tussock

Essex: 49 hectads. Patch: regular in small numbers in two generations, 2006-24, 29 Mar-7 May; 8 July-10 Aug.

Overton Drive: 10 May; Belgrave Rd: 21-27 July (3, 2nd gen). Photo verification received.



73.037/73.038 Dark/Grey Dagger agg *Acronicta tridens* / *A. psi*

Essex: 50 hectads. Patch: scarce, 14 records, 2012-24: 4 May-21 Aug
Belgrave Rd: 27 July. **Photo** verification received.

73.045 Knot Grass *Acronicta rumicis*

Essex: 52 hectads. Patch: regular in small numbers, sometimes in two generations, 2005-24: 11 Apr-9 June; 12 July-16 Aug. A salicis individual in Belgrave light-trap on 30 June 2012.
Belgrave Rd: 26 May; 27 July-10 August (2, 2nd generation). **Photo** verification received.

73.047 Coronet *Craniophora ligustri*

Essex: 47 hectads. Patch: scarce, 11 records, 2019-24: 2 May-10 July. Increasing?
Overton Drive: 27 July; Belgrave Rd: 10-12 August (2). **Photo** verification received.



73.048 Small Yellow Underwing *Panemeria tenebrata*

Essex: 38 hectads. Patch: small numbers, day flying, 2014-24: 25 Apr-22 May
Wanstead Flats: 5 May (Denise Rooney)

73.058 Mullein *Cucullia verbasci*

Essex: adults very scarce, 46 hectads. Patch: only caterpillars seen.
OSW: 21 June (2 larvae). **Photo** verification received. Not so far attracted to light-trap.

73.059 Toadflax Brocade *Calophasia lunula*

Essex: **RDB** species, 38 hectads. Patch: regular in small numbers, 2006-24, 24 April-18 Aug
Belgrave Rd: 12 June, 12-27 July (2); 25 August. **Photo** verification received.



73.062-73.063 Copper Underwing / Svensson's Copper Underwing *Amphipyra pyramidea* / *A. berbera*

Essex: 37 hectads. Patch: regular in small numbers, 2003-24, 10 July-22 Sept
Belgrave Rd: 10 August

73.063 Svensson's Copper Underwing *Amphipyra berbera*

Essex: 48 hectads. Patch: scarce, 2 records: 8 September 2013 and 20 July 2024. Possibly under-recorded.
Belgrave Rd: 20 July. **Photo** verification received.



73.069 Early Grey *Xylocampa areola*

Essex: 50 hectads. Patch: regular in small numbers, 2006-24, 1 Mar-19 May.

Overton Drive: 1 March; Belgrave Rd: 19 March-12 April (8)

73.082 Tree-lichen Beauty *Cryphia algae*

Essex: 53 hectads. Patch: common in one generation, 2005-24, 4 July-7 Sept. Best year: 60 in 2020 (Belgrave).

Belgrave Rd: 18 July-7 September (12, inc 6 on 10/8). Photo verification received.

73.084 Marbled Beauty *Bryophila domestica*

Essex: 53 hectads. Patch: regular in small numbers in one generation, 2005-24, 11 June-18 Sept.

Best year: 13 in 2020 (Belgrave Rd).

Overton Drive: 21 July; Belgrave Rd: 10-29 August (4). Photo verification received.



73.092 Mottled Rustic *Caradrina morpheus*

Essex: 53 hectads. Patch: regular in small numbers 2005-24, 11 June-3 Aug

Belgrave Rd: 17 June. Photo verification received.

73.093 Clancy's Rustic *Caradrina kadenii*

Essex: 30 hectads. Patch: scarce, 7 records 2023-24, 26 June-5 Oct. Increasing, or previously overlooked?

Overton Drive: 26 June. Barclay Rd: 29 June-5 October (2). Photo verification received.

73.095 Pale Mottled Willow *Caradrina clavipalpis*

Essex: 53 hectads. Patch: common, in several overlapping generations, 2005-24, 28 Feb-13 Oct.

Best year: 132 in 2023 (Belgrave Rd).

Barclay Road: 18 March; LH: 7 April-2 October (56, inc 6 on 29/5, 17/6; 7 on 3/9)

73.096 Uncertain *Hoplodrina blanda*

Essex: 56 hectads. Patch: common, 2020-24, 9 June-31 July. Best year: 66 in 2020 (Belgrave Rd). Before 2020, this species and Rustic (*H. blanda*) were often not differentiated. 2024 was a very poor year for both.

Overton Drive: 14 June; Belgrave Rd: 27 June-18 July (19, inc 9 on 29/6). Photo verification received.

73.099 Vine's Rustic *Hoplodrina ambigua*

Essex: 55 hectads. Patch: common, 2005-24, in two generations: 18 May-8 July; 5 Aug-21 Sept.

Best year: 90 (8; 82) in 2019 (Belgrave Rd). 2024 was a poor year.

Belgrave Rd: 12 June; 25 August (3)

73.101 Treble Lines *Charanyca trigrammica*

Essex: 50 hectads. Patch: common, 2012-24, 6 May-23 June. Best year: 114 in 2021 (Belgrave).

Overton Drive: 6 May; Belgrave Rd: 10 May-2 June (45, inc 9 on 15/5); Barclay Rd: latest on 3 June

73.102 Brown Rustic *Rusina ferruginea*

Essex: 46 hectads. Patch: scarce away from Wanstead Park, with 5 records, 2010-24: 31 May-25 June.

However, four trapping sessions in June in Warren Wood/Temple area 2022-24 produced 17 individuals.

Warren Wood/Temple: 21 June (2)

73.105 Bird's Wing *Drypterygia scabriuscula*

Essex: 40 hectads. Patch: regular in small numbers 2005-24, 9 May-14 Aug. Best year: 28 in 2021 (Belgrave).

Belgrave Rd: 17 June-7 July (6)

73.109 Straw Underwing *Thalpophila matura*

Essex: 53 hectads. Patch: common, 2005-24, 7 Aug-21 September. Best year: 34 in 2019 (Belgrave).

Overton Drive: 19 August; Belgrave Rd: 25 August-3 September (10)

73.113 Angle Shades *Phlogophora meticulosa*

Essex: 53 hectads. Patch: regular in small numbers in two generations 2005-24, 6 Feb-11 June; 11 Aug-14 Sept.

Best year: 29 (17; 12) in 2020 (Belgrave).

Overton Drive: 6 February; Belgrave Rd: 12 April, 8 May



73.120 Dusky Sallow *Eremobia ochroleuca*

Essex: 53 hectads. Patch: regular in small numbers 2012-24, 25 June-28 July. Best year: 7 in 2022 (Belgrave).

Overton Drive: 14 July; Belgrave Rd: 16-27 July (3). [Photo](#) verification received.

73.131 Flounced Rustic *Luperina testacea*

Essex: 54 hectads. Patch: common, 2005-24, 10 Aug-24 Sept. Best year: 15 in 2021 (Belgrave Rd).

Overton Drive: 28 August; Belgrave Rd: 29 August-7 September (4)

73.151 Webb's Wainscot *Globia sparganii*

Essex: 44 hectads. Patch: scarce, 7 records 2015-24, 2 July-10 Aug

Overton Drive: 18 July. [Photo](#) verification received.

73.158 Rustic Shoulder-knot *Apamea sordens*

Essex: 49 hectads. Patch: regular in small numbers 2012-24, 29 Apr-25 June

Belgrave Rd: 2 June

73.159 Small Clouded Brindle *Apamea unanimitis*

Essex: 30 hectads (315 records). Patch: scarce, 2 records: 9 July 2023, 5 June 2024

Belgrave Rd: 5 June



73.160 Slender Brindle *Apamea scolopacina*

Essex: 38 hectads (316 records). Patch: no previous records.

Overton Drive: 13 July. Photo verification received. The first record for the patch.

73.162 Dark Arches *Apamea monoglypha*

Essex: 55 hectads. Patch: common, 2005-24, 1 June-8 Aug. 2024 was the best-ever year.

Belgrave Rd: 1 June-21 July (27, inc 9 on 29/6). Photo verification received.

73.163 Light Arches *Apamea lithoxylaea*

Essex: 54 hectads. Patch: regular in small numbers 2012-24, 11 June-27 July.

Belgrave Rd: 29 June. Photo verification received.

73.169-73.170 Common Rustic agg *Mesamapea secalis* / *M. didyma*

Essex: 54 hectads. Patch: common, 2005-24, 27 June-1 Sept. Best year: 47 in 2019 (Belgrave Rd).

Overton Drive: 11 July; Belgrave Rd: 16 July-25 August (13)

73.172 Cloaked Minor *Mesoligia furuncula*

Essex: 54 hectads. Patch: regular in small numbers 2005-24, 6 July-29 Aug. Best year: 12 in 2020 (Belgrave).

Barclay Road: 18 July; Belgrave Rd: 10-29 August (4)



73.173-73.175 Marbled Minor agg *Oligia strigilis* / *O. latruncula* / *O. versicolor*

Essex: 48 hectads. Patch: common, 2005-24, 10 May-25 July. Best year: 33 in 2020 (Belgrave) but 2024 was the second-best year.

Belgrave Rd: 10 May-29 June (26, inc 10 on 2/6)

73.179 Orange Sallow *Tiliacea citrigo*

Essex: 41 hectads. Patch: regular in small numbers 2005-24, 11 Aug-4 Oct.

Belgrave Rd: 4 October



73.186 Beaded Chestnut *Agrochola lychnidis*

Essex: 52 hectads. Patch: scarce, 3 records 2019-24: 22 October 2019 and 2 in 2024.

Overton Drive: 2 October, 31 October. Photo verification received.

73.189 Red-line Quaker *Leptologia lota*

Essex: 50 hectads. Patch: regular in small numbers 2015-24, 6 Oct-8 Nov.

Belgrave Rd: 31 October-2 November (2). Photo verification received.



73.190 Yellow-line Quaker *Leptologia macilenta*

Essex: 46 hectads. Patch: regular in small numbers 2015-24, 14 Oct-12 Nov. Best year: 13 in 2020 (Belgrave).

Overton Drive: 10 November

73.193 Lunar Underwing *Anchoscelis lunosa*

Essex: 52 hectads. Patch: common, 2005-24, 13 Sept-13 Oct. Best year: 14 in 2020 (Belgrave).

Belgrave Rd: 16 September-4 October (3)

73.194 Chestnut *Conistra vaccinii*

Essex: 49 hectads. Patch: regular in small numbers, in two generation, 2005-24: 23 Jan-22 Apr; 7 Aug-17 Oct

Overton Drive: 23 January; Belgrave Rd: 2 October

73.195 Dark Chestnut *Conistra ligula*

Essex: 44 hectads. Patch: scarce, 7 records, 2014-24: 19 Nov-15 Mar

Belgrave Rd: 3 February

73.206 Blair's Shoulder Knot *Lithophane leautieri*

Essex: 47 hectads. Patch: scarce, 13 records 2005-24: 18 Sept-2 November

Belgrave Rd: 4-29 October (2)

73.210 Satellite *Eupsilia transversa*

Essex: 47 hectads. Patch: regular in small numbers in two generations, 2005-24: 30 Jan-17 Mar; 19 Oct-13 Nov

Overton Drive: 30 January; SoM: 2 May (larva); Wanstead Flats: 27 October

73.216 Dun-bar *Cosmia trapezina*

Essex: 54 hectads. Patch: common, 2005-24, 16 June-15 Aug. Best year: 19 in 2019 (Belgrave Rd).

Overton Drive: 19 June; The Temple, Wanstead Park: 21 June; Belgrave Rd: 27 June-27 July (16, inc 10 on 16/7). [Photo](#) verification received.

73.219 Centre-barred Sallow *Atethmia centrago*

Essex: 49 hectads. Patch: regular, small numbers 2013-24, 18 Aug-14 Sept. Best year: 7 in 2023 (Belgrave Rd).

Overton Drive: 21 August; Belgrave Rd: 31 August-7 September (5, inc 3 on 7/9).

[Photo](#) verification received.



73.224 Merveille du Jour *Griposia aprilina*

Essex: 49 hectads. Patch: regular in small numbers 2014-24, 20 Sept-9 Nov. Best years: 8 in 2024 (Overton Drive) and 7 in 2020 (Belgrave Rd).

Overton Drive: October-1 November (8); Belgrave Rd: 2 November (2)



73.225 Brindled Green *Dryobotodes eremita*

Essex: 49 hectads. Patch: regular in small numbers 2005-24, 7 Sept-31 Oct. Best year: 12 in 2020 (Belgrave).

Long Wood, Wanstead Flats: 2 May (larva); Overton Drive: 15 September, 31 October;

MPC: 31 October (Rose Stevens)

73.231 Deep-brown Dart *Aporophyla lutulenta*

Essex: 49 hectads. Patch: regular in small numbers 2014-24, 11 Sept-11 Oct.

Overton Drive: 25 September. [Photo](#) verification received.

73.233 Black Rustic *Aporophyla nigra*

Essex: 49 hectads. Patch: regular in small numbers 2005-24, 9 Sept-15 Nov. Best year: 15 in 2020 (Belgrave).

Overton Drive: 23 September; LH: 24-29 October (2). [Photo](#) verification received.



73.237 Large Ranunculus *Polymixis flavicincta*

Essex: 49 hectads. Patch: scarce, 7 records 2005-24, 27 Aug-13 Oct

Overton Drive: 23 September. Photo verification received.

73.242 Clouded Drab *Orthosia incerta*

Essex: 49 hectads. Patch: regular in small numbers 2006-24, 4 Feb-28 April. 2024 was the best-ever year.

Overton Drive: 4 February; Belgrave Rd: 27 February-22 April (11)

73.244 Common Quaker *Orthosia cerasi*

Essex: 51 hectads. Patch: common, 2006-24, 29 Jan-2 May. The most common early spring large moth locally though numbers vary greatly from year to year. 2024 was the best-ever year.

Belgrave Rd: 29 January-12 April (185, inc 28 on 15/2, 31 on 13/3); Overton Drive: 41 on 21/2

All years, Belgrave Rd:

2012: 73, 28 February-30 March

2013: recorded

2014: 6 March ->

2015: recorded

2016: recorded

2017: 19 February ->

2018: 17 March ->

2019: 80, 12 February-23 April; peak 19 on 25 February

2020: 9, 16 March-18 April

2021: 78, 15 February-2 May; peak 7 on 19 February, 29 March

2022: 24, 10 March-19 April

2023: 99, 16 February-22 April; peak 28 on 19 March

2024: 185, 29 January-12 April; peak 31 on 13 March

73.245 Small Quaker *Orthosia cruda*

Essex: 51 hectads. Patch: common, 2006-24, 10 Feb-19 April. Best year: 51 in 2021 (Belgrave Rd).

Belgrave Rd: 10 February-29 March (39, inc 10 on 5/3); Overton Drive: 22 on 6/3



73.247 Powdered Quaker *Orthosia gracilis*

Essex: 50 hectads. Patch: scarce, 3 records 2013-24, 9 Mar-7 May

Overton Drive: 11 April. Photo verification received.

73.249 Hebrew Character *Orthosia gothica*

Essex: 53 hectads. Patch: common 2006-24, 7 Feb-26 Apr. Best year: 45 in 2021 (Belgrave).

Overton Drive: 7 February; Belgrave Rd: 10 February-16 April (39)

73.250 Twin-spotted Quaker *Anorthoa munda*

Essex: 47 hectads. Patch Regular in small numbers 2012-24, 27 Feb-9 Apr. Best year: 13 in 2012.

Overton Drive: 27 February; Belgrave Rd: 5-30 March (6); SoM area, Wanstead Park: 4 May (larva, JH)

73.252 Hedge Rustic *Tholera cespitis*

Essex: 32 hectads. Patch Scarce, 6 records 2019-24, 2-14 Sept

Overton Drive: 11 September. Photo verification received.

73.263 Light Brocade *Lacanobia w-latinum*

Essex: 46 hectads. Patch: regular in small numbers 2013-24, 8 May-19 June. Best year: 12 in 2022 (Belgrave).

Belgrave Rd: 8 May-2 June (10). Photo verification received.



73.267 Bright-line Brown-eye *Lacanobia oleracea*

Essex: 46 hectads. Patch: regular in small numbers 2005-24, 22 Apr-3 Sept. Best year: 15 in 2020 (Belgrave).

Barclay Rd: 12 May; Belgrave Rd: 2-29 June (3); 27 July

73.274 Cabbage Moth *Mamestra brassicae*

Essex: 49 hectads. Patch: regular in small numbers 2005-24, 17 Apr-6 Sept.

Overton Drive: 5 May; Belgrave Rd: 27 July. Photo verification received.

73.276 Campion *Sideridis rivularis*

Essex: 42 hectads. Patch: scarce, 6 records 2005-24, 10-25 July

Belgrave Rd: 18 July



73.280 Small Ranunculus *Hecatera dysodea*

Essex: RDB species, 36 hectads (374 records). Patch: scarce, 4 records 2019-24, 31 May-2 Aug
Overton Drive: 3 July. [Photo](#) verification received.

73.281 *Lychnis Hadena bicruris*

Essex: 47 hectads. Patch: regular in small numbers 2005-24, 20 May-16 June; 7-13 Aug
Overton Drive: 7 June

73.291 Common Wainscot *Mythimna pallens*

Essex: 42 hectads. Patch: regular in small numbers in two generations, 2005-24: 2 June-20 July;
10 Aug-11 Sept.
Belgrave Rd: 2 June. [Photo](#) verification received.

73.293 Smoky Wainscot *Mythimna impura*

Essex: 55 hectads. Patch: scarce, 8 records 2005-24, 17 June-18 July
Belgrave Rd: 17 June-18 July (3). [Photo](#) verification received.

73.295 The Delicate *Mythimna vitellina*

Essex: 36 hectads (371). Patch: scarce, 2 records: 12 October 2017 and 27 August 2024.
Overton Drive: 27 August. [Photo](#) verification received.

73.297 White-point *Mythimna albipuncta*

Essex: 50 hectads. Patch: common, 2012-24 in two generations, 9 May-8 July; 9 Aug-17 Oct.
Best years: 59 (44; 15) in 2019 and 57 (19; 38) in 2023 (Belgrave).
Belgrave Rd: 2 June; 12 August-19 September (5)

73.298 Clay *Mythimna ferrago*

Essex: 55 hectads. Patch: regular in small numbers 2005-24, 20 June-11 Aug. Best year: 8 in 2020 (Belgrave).
Barclay Road: 29 June; Overton Drive: 6 July; Belgrave Rd: 16-27 July (3). [Photo](#) verification received.

73.300 L-album Wainscot *Mythimna l-album*

Essex: RDB species, 42 hectads. Patch: regular in small numbers, 2014-24, in two generations: 8 June-8 July;
25 Aug-17 Oct. Best year: 15 (1; 14) in 2020 (Belgrave).
Overton Drive: 5 July; Belgrave Rd: 7 September-2 October (3); Brading Crescent: 16 September



73.301 Shoulder-striped Wainscot *Leucania comma*

Essex: 50 hectads. Patch: common, 2005-24, 24 May-16 July. Best year: 17 in 2019 (Belgrave Rd).
Belgrave Rd: 16 July

73.317 Heart and Dart *Agrotis exclamationis*

Essex: 50 hectads. Patch: common, 2005-24, 3 May-28 Aug. Best year: 174 in 2019 (Belgrave Rd).
Belgrave Rd: 2 June-18 July (36, inc 10 on 29/6)

73.319 Turnip *Agrotis segetum*

Essex: 52 hectads. Patch: regular in small numbers 2005-24, in two generations: 6 May-6 July; 23 July-22 October.
Best year: 11 (2; 9) in 2020 (Belgrave Rd).
Overton Drive: 21 May; Belgrave Rd: 16 October

73.320 Heart and Club *Agrotis clavis*

Essex: 51 hectads. Patch: common, 2005-24, 9 June-22 July. Best year: 22 in 2021 (Belgrave Rd).
Overton Drive: 14 June; The Temple, Wanstead Park: 21 June; Belgrave Rd: 27 June-18 July (12)



73.324 Crescent Dart *Agrotis trux*

Essex: very scarce (8 records). Patch: scarce, 5 records 2014-24: 12 September 2014, September 2015, 18 September 2017, plus this year's two, which represent the seventh and eighth Essex records; the patch is the best site for the species in the county and this suggests that there is a small breeding population locally. **Belgrave Rd: 19 September; Pastures garden: 20 September.** **Photo** verification received.



73.325 Shuttle-shaped Dart *Agrotis puta*

Essex: 52 hectads. Patch: common, 2005-24, in two generations: 22 Apr-25 June; 16 July-28 August.
Best year: 29 (9; 20) in 2020 (Belgrave Rd).

Barclay Rd: 9 May; Belgrave Rd: 14 May-5 June (5); 27 July-25 August (2)

73.328 Flame *Axylia putris*

Essex: 54 hectads. Patch: regular in small numbers 2013-24, 16 June-15 July

Overton Drive: 28 May, 7 June. Photo verification received.

73.329 Flame Shoulder *Ochropleura plecta*

Essex: 54 hectads. Patch: regular in small numbers 2012-24, 21 May-16 September.

Overton Drive: 1-19 August (2). Photo verification received.

73.334 Small Square-spot *Diarsia rubi*

Essex: 54 hectads. Patch: regular in small numbers 2014-24, two generations: 12 May-15 June; 11 Aug-5 Sept.

Overton Drive: 27 May; Belgrave Rd: 2 June. Photo verification received.

73.342 Large Yellow Underwing *Noctua pronuba*

Essex: 57 hectads. Patch: common, 2005-24, 19 May-22 Oct. Best years: 225 in 2029.

OSW, Wanstead Park: 3 March (larva); Belgrave Rd: 22 May-22 October (54, inc 9 on 7/9)

All years, Belgrave Rd:

2012: 76, 26 May-22 October

2013: recorded

2014: 5 June ->

2015: recorded

2016: 4 June ->

2017: 14 June ->

2018: 8 June ->

2019: 225, 14 June-16 October; peak 27 on 10 September

2020: 142, 19 May-6 October; peak 13 on 2 September

2021: 49, 9 June-24 September; peak 15 on 7 September

2022: 20, 26 May-17 October; peak 3 on 11 July

2023: 72, 15 June-22 September; peak 18 on 7 September

2024: 54, 22 May-22 October; peak 9 on 7 September

73.343 Broad-bordered Yellow Underwing *Noctua fimbriata*

Essex: 57 hectads. Patch: common, 2005-24, 17 June-8 October. Best year: 26 in 2019 (Belgrave Rd). 2024 was particularly poor, as it was for all the yellow underwing species.

Barclay Rd: 18 July; Belgrave Rd: 3-7 September (2)



73.345 Lesser Yellow Underwing *Noctua comes*

Essex: 54 hectads. Patch: common, 2005-24, 2 June-24 Oct. Best year: 54 in 2019 (Belgrave Rd).
Belgrave Rd: 2 June, 16 July, 19 September; 16-24 October (5)

73.348 Lesser Broad-bordered Yellow Underwing *Noctua janthe*

Essex: 54 hectads. Patch: common, 2005-24, 27 June-22 Sept. Best year: 78 in 2019 (Belgrave Rd).
Belgrave Rd: 27 June-7 September (4)

73.357 Square-spot Rustic *Xestia xanthographa*

Essex: 54 hectads. Patch: common, 2005-24, 3 Aug-16 Oct. Best year: 91 in 2019 (Belgrave Rd).
Belgrave Rd: 25 August-16 October (10)

73.359 Setaceous Hebrew Character *Xestia c-nigrum*

Essex: 55 hectads. Patch: common, 2005-24, in two generations: 9 May-28 June; 9 Aug-26 September.
Best year: 46 (6; 40) in 2019 (Belgrave Rd).
Barclay Rd: 16 May; Belgrave Rd: 2-17 June (5); 25 August-3 September (8)



74.003 Short-cloaked Moth

Essex: 50 hectads. Patch: regular in small numbers 2005-24, 2 June-17 July.
Belgrave Rd: 12 June



74.009 Oak Nycteoline

Regular in small numbers 2012-24, 15 Feb-21 June; 23-30 Jun
Belgrave Rd: 15 February; Warren Wood: 21 June. Photo verification received

MICROMOTHS (151)

2.001 Common Spring Jewel *Dyseriocrania subpurpurella*

Essex: 40 hectads. Patch: 25 Mar-9 April

Belgrave Rd: 29 March (2)

2.005 Yellow-headed Spring Jewel *Eriocrania salopiella*

Essex: 5 hectads (6 records).

Motorcycle Wood, SSSI: 7 April. Photo verification received. A new record for the patch.

4.068 Broom Dot *Trifurcula immundella*

Essex: 1 hectad; this is the first record since 2011

Wanstead Flats: 16 November (mine on Broom) (Will Langdon)

5.001 Sorrel Cap *Opostega salaciella*

Essex: 12 hectads (36 records). Patch: 17 May-21 July

OSW, Wanstead Park: 17 May (2)

7.001 Yellow-barred Longhorn *Nemophora degeerella*

Essex: 43 hectads. Patch: 7 May-16 June

Belgrave Rd: 11 May

7.006 Green Longhorn *Adela reaumurella*

Essex: 43 hectads. Patch: 1 Apr-7 June

Esso Copse, Long Wood and SoM: 1-8 April. An early emergence.

7.010 Meadow Longhorn *Cauchas rufimitrella*

Essex: 20 hectads.

Davis Lane scrub, Wanstead Flats: 6 April. A new record for the patch.

8.002 Feathered Leaf-cutter *Incurvaria masculella*

Essex: 38 hectads. Patch: 7 Apr-4 May

Wanstead Park: 1 April; Long Wood: 7 April; Belgrave Rd: 12 April. Photo verification received.



10.003 Bordered Carl (Bramble Blotch-miner) *Coptotriche marginea*

Essex: 42 hectads. Patch: 19 May-16 Aug

Belgrave Rd: 17 June

11.012 Common Bagworm *Psyche casta*

Essex: 42 hectads.

Belgrave Rd: 15 April (larval case) and throughout the summer

12.026-12.027 Clothes moth *Tineola* species

Belgrave Rd, Barclay Rd

12.036 Skin Moth *Monopis laevigella*

Essex: 30 hectads. Patch: 1 May-21 May; 11 Aug

Belgrave Rd: 15 May. **Photo** verification received.



12.038/12.039 Yellow-backed/Pale-backed Detritus Moth *Monopis obviella/crocicapitella*

Essex: 29 hectads. Patch: 4 May-23 Oct

Barclay Rd: 9 May

14.011 Surrey Elm Tuft *Bucculatrix ulmifoliae*

Essex: 4 hectads, 8 records; only the 4th Essex site.

Wanstead Flats: 16 November (mine on elm) (Will Langdon)

15.002 Privet Stilt *Caloptilia cuculipennella*

Essex: 10 hectads.

Belgrave Rd: 18 July. **Photo** verification received. A new record for the patch.



15.003/15.0131 Black-dot Stilt / Pale Maple Stilt *Caloptilia populetorum* / *C. honoratella*

Essex: 16 hectads.

Barclay Rd: 13 April, 9 May

15.006 Rufous Stilt *Caloptilia rufipennella*

Essex: 24 hectads. Patch: 17 July-12 Aug

Belgrave Rd: 18 July. Photo verification received.

15.007 Azalea Leaf-miner *Caloptilia azaleella*

Essex: 11 hectads. Patch: 8 May-16 July

Barclay Rd: 9 May; Belgrave Rd: 16 July. Photo verification received.



15.008/15.009 Yellow-triangle Slender *Caloptilia alchimiella/robustella*

Essex: 29 hectads. Patch: 1 May-31 May; 26 July-7 Sept

Long Wood, Wanstead Flats: 2 May; Belgrave Rd: 27 July

15.041 London Midget / Plane Leaf-miner *Phyllonorycter platani*

Essex: 24 hectads. Patch: 12 April-17 June

Davies Lane scrub: 12 April

[15.075 Common Birch Leaf-miner *Phyllonorycter ulmifoliella*]

Belgrave Rd: 16 July. Showed strong characteristics of this species but Simon Wood recommends recording as *Phyllonorycter* sp.

15.060 Gorse Leaf-miner *Phyllonorycter ulicicolella*

Essex: 2 hectads, 1 previous record

Wanstead Flats: 16 November (mine on gorse) (Will Langdon)

15.089 Horse-chestnut Leaf-miner *Cameraria ohridella*

Essex: 46 hectads. Patch: 11 Apr-14 Sept

Belgrave Rd: 27 July. Photo verification received.

16.001 Bird-cherry Ermine *Yponomeuta evonymella*

Essex: 48 hectads. Patch: 12 June-25 Aug

Belgrave Rd: 29 June-25 August (24, inc 8 on 18/7). Photo verification received.

16.xxx Ermine agg, *Yponomeuta* species

Patch: 10 June-18 Sept

Belgrave Rd: 29 June-16 September (51, inc 13 on 18/7). **Photo** verification received.

16.005 Willow Ermine *Yponomeuta rorrella*

Essex: 36 hectads. Patch: 15 July-3 Aug

Belgrave Rd: 16-27 July (3). **Photo** verification received.



18.001 Diamond-back Moth *Plutella xylostella*

Essex: 54 hectads. Patch: 18 May-14 Sept

Barclay Road: 19 May

20.007 Cypress-tip *Argyresthia cupressella*

Essex: 27 hectads. Patch: 8 May-17 June

Belgrave Rd: 8 May-17 June (7)

20.018 Blackthorn Argent *Argyresthia spinosella*

Essex: 33 hectads. Patch: 14-22 May

Belgrave Rd: 14 May

20.024 Beech Tip Moth *Argyresthia semitestacella*

Essex: 6 hectads, first Essex record since 2022. Patch: Simon Wood: “a good record of this not-often-seen species”.

Wanstead: 10 September (observer unknown)

21.001 Apple Leaf Miner *Lyonetia clerkella*

Essex: 44 hectads. Patch: 24 May-16 Sept

Belgrave Rd: 2 June-27 July (27, inc 17 on 18/7)

21.005 Broom Stem-miner *Leucoptera spartifoliella*

Essex: 5 hectads, only the 6th Essex site

Wanstead Flat: 16 November (mine on Broom) (Will Langdon)

25.001 Hawthorn Moth, *Scythropia crataegella*

Essex: 39 hectads. Patch: 30 May-21 June; 6 Aug-11 Sept

Belgrave Rd: 17 June; 25-29 August (3, second generation)

27.001-27.003 Yellowneck *Oegoconia* species

Essex: 33 hectads. Patch: 15 June-28 Sept

Overton Drive: 11 July; Brading Crescent: 19 July; Belgrave Rd: 16-27 July (3, *caradjai*?)

28.009 White-shouldered House Moth *Endrosis sarcitrella*

Essex: 51 hectads. Patch: 20 Mar-20 September

Belgrave Rd: 5-18 May (3); 12 July

28.010 Brown House Moth *Hofmannophila pseudospretella*

Essex: 50 hectads. Patch: 13 Mar-9 Sept

Belgrave Rd: 13 March-31 August (14)

28.014 Brown Bark Moth *Crassa unitella*

Essex: 50 hectads. Patch: 9 June-14 Aug

Belgrave Rd: 17 June-21 July (7); Warren Wood: 21 June. Photo verification received.

28.015 Lesser Tawny Crescent *Batia lunaris*

Essex: 40 hectads. Patch: 18 June-8 July

Belgrave Rd: 29 June. Photo verification received.

28.022 Hedge Beauty *Alabonia geoffrella*

Patch: 12 May-12 June

Shoulder of Mutton area, Wanstead Park: 12 May. Photo verification received.



28.024 Australian Orange-tip *Tachystola acroxantha*

Essex: 27 hectads. Patch: 28 Jan-9 Nov

Belgrave Rd: 29 January; 7 April-7 September (87); 29-31 October (7). At Belgrave Rd, the second most common species recorded during 2024.

29.001 Early Reveller *Diurnea fagella*

Essex: 42 hectads. Patch: 6-29 March

Overton Drive: 6 March (2)

31.001 Oak Longhorn *Carcina quercana*

Essex: 52 hectads. Patch: 26 May-14 Sept

Overton Drive: 26 May; Belgrave Rd: 29 June-12 August (6). **Photo** verification received.

32.017 Brindled Buff *Agonopterix arenella*

Essex: 41 hectads. Patch: 26 May 2015, 26 May 2020

Belgrave Rd: 12 August

32.018-32.019 Common Brindled Brown / Banded Brindled Brown *Agonopterix heracliiana / ciliella*

Essex: 37 hectads. Patch: 15 Feb-26 Mar

Belgrave Rd: 15 February. Simon Wood: "almost a pinkish tone to this one points to ciliella but need GD".

32.031 Hemlock Moth/Brown-spot Flat-body *Agonopterix alstromeriana*

Essex: 46 hectads. Patch: 14 Feb-7 September (10)

Overton Drive: 14 February; Belgrave Rd: 11 March

35.022 Juniper Webber *Dichomeris marginella*

Essex: 27 hectads.

Overton Drive: 27 July. **Photo** verification received. A new record for the patch.

35.038 House Moss-moth *Bryotropha domestica*

Essex: 37 hectads. Patch: 1 June-4 Sept

Belgrave Rd: 17 June

35.047 Dark Moss-moth *Bryotropha affinis*

Essex: 37 hectads. Patch: 2 June-26 July

Belgrave Rd: 2 June

35.141 Black-spotted Grey *Teleiodes vulgella*

Essex: 37 hectads. Patch: 29 June-8 July

Belgrave Rd: 29 June. **Photo** verification received.

35.0191 Maple Snout *Anarsia innoxia*

Essex: 21 hectads.

Belgrave Rd: 16 July-25 August (2). **Photo** verification received. A new record for the patch.



35.156 Southern Apple Moth *Recurvaria nanella*

Essex: 21 hectads. Patch: 17 June-14 Aug

Belgrave Rd: 10 August (1st for garden). **Photo** verification received.

35.157 White-barred Apple Moth *Recurvaria leucatella*

Essex: RDB species, 29 hectads. Patch: 18 June-20 July

Belgrave Rd: 18 July. **Photo** verification received.

37.063 Gorse Case-bearer *Coleophora albicosta*

Essex: 14 hectads, 43 previous records. Patch: 26 May-17 June.

Belgrave Rd: 26 May-17 June. **Photo** verification received. A new record for the patch.

37.xxx Case-bearer *Coleophora* species

Patch: 15 June-12 Aug

Belgrave Rd: 29 June-12 August (4)

40.008 Garden Mompha *Mompha subbistrigella*

Essex: 40 hectads. Patch: 27 March-8 July

Barclay Rd: 8 July. **Photo** verification received.

40.008-40.009 Garden Cosmet *Mompha subbistrigella*/Rosebay Gall Mompha *Mompha sturnipennella*

Essex: 40 hectads. Patch: 27 Mar-25 June

Belgrave Rd: 15 May (2)

41.002 Common Masoner *Blastobasis adustella*

Essex: 54 hectads. Patch: 21 June-18 Sept

Warren Wood: 21 June; Belgrave Rd: 21 July-25 August (8)

44.001 Many-plumed Moth *Alucita hexadactyla*

Essex: 44 hectads. Patch: 17 Mar-30 August

Belgrave Rd: 17 March-12 April (4); 23 June; 10 August



45.010 Beautiful Plume *Amblyptilia acanthadactyla*

Essex: 47 hectads. Patch: 1 Jan-15 Sep

Belgrave Rd: 4 April; 17 June-18 July (4)

45.044 Common Plume *Emmelina monodactyla*

Essex: 53 hectads. Patch: 28 Jan-16 Sept

Barclay Road: 18 March; Belgrave Rd: 20 March (1), 17 June-12 August (5)

49.004 Red-barred Tortrix *Ditula angustiorana*

Essex: 48 hectads. Patch: 19 May-21 July. Best year: 16 in 2023 (Belgrave Rd).

Belgrave Rd: 29 June-18 July (5); Wanstead Park: 16 July

49.013 Large Fruit-tree Tortrix *Archips podana*

Essex: 51 hectads. Patch: two generations, 30 May-29 June; 26 Aug-18 Sept.

Belgrave Rd: 2 June; Warren Wood / Temple: 21 June. [Photo](#) verification received.

49.014 Brown Oak Tortrix *Archips crataegana*

Essex: 29 hectads. Patch: 7 June-1 July

Overton Drive: 7 June. [Photo](#) verification received.

49.015 Variegated Golden Tortrix *Archips xylosteana*

Essex: 49 hectads. Patch: 2 June-4 Sept

Belgrave Rd: 2-29 June (15, inc 6 on 17/6); Warren Wood / Temple: 21 June (3)



49.018 Great Tortrix *Choristoneura hebenstreitella*

Essex: 15 hectads. Patch: scarce, 3-13 June

Overton Drive: 3 June

49.022 Brindled Tortrix *Ptycholoma lecheana*

Essex: 31 hectads. Patch: scarce, 11-21 May

Overton Drive: 11 May

49.024 Chequered Fruit-tree Tortrix *Pandemis corylana*

Essex: 46 hectads. Patch: 1 Aug-8 Sept

Overton Drive: 11-25 August

49.025 Barred Fruit-tree Tortrix *Pandemis cerasana*

Essex: 50 hectads. Patch: 24 Apr-21 Aug

Belgrave Rd: 8 June



49.028 Dark-barred Tortrix *Syndemis musculana*

Essex: 36 hectads. Patch: 7 May-24 May

Belgrave Rd: 15 May

49.030 Carnation Tortrix *Cacoecimorpha pronubana*

Essex: 43 hectads. Patch: 29 May-1 September

Overton Drive: 1 September

49.0372 Banded Ivy Tortrix *Clepsis dumicolana*

Essex: status uncertain. Patch: 18 May-26 October

Barclay Road: 18 May; Pastures garden: 20 September (4). **Photo** verification received.



49.038 Rufous Tortrix *Clepsis consimilana*

Essex: 48 hectads. Patch: 10 June-9 Sept

Belgrave Rd: 17 June. **Photo** verification received.

49.039 Light Brown Apple Moth *Epiphyas postvittana*

Essex: 53 hectads. Patch: sometimes abundant locally, 15 Feb-21 Nov. Best year: 123 in 2012 (Belgrave Rd)
Barclay Road: 18 March; Belgrave Rd: 20 March-2 November (69). The fifth most common species at Belgrave Rd in 2024.

49.040 Orange Pine Tortrix *Lozotaenides formosanus*

Essex: 45 hectads. Patch: 16 June-20 July
Overton Drive: 9 July. **Photo** verification received.

49.044 Spring Harbinger *Tortricodes alternella*

Essex: 41 hectads. Patch: 12 Feb-21 March
Belgrave Rd: 27 February; Overton Drive: 13 February (4)

49.049-49.052 Grey Tortrix agg *Cnephasia* species

Essex: 42 hectads. Patch: 2 May-27 July
Belgrave Rd: 26 May-27 July (6)

49.059 Green Oak Tortrix *Tortrix viridana*

Essex: 54 hectads. Patch: sometimes common, 18 May-23 July. Best year: 22 in 2023 (Belgrave Rd)
Overton Drive: 18 May; Shoulder of Mutton area: 23 May-17 June (15, inc 8 on 17/6). **Photo** verification received.



49.060 Yellow Oak Button *Aleimma loeflingiana*

Essex: 50 hectads. Patch: 30 May-29 July. Best year: 38 in 2023 (Belgrave Rd)
Belgrave Rd: 2-17 June (6); Warren Wood/Temple: 21 June (3). **Photo** verification received.

49.062 Netted Tortrix *Acleris forsskaleana*

Essex: 48 hectads. Patch: 16 June-21 Aug
Belgrave Rd: 18 July

49.076 Tufted Tortrix *Acleris cristana*

Essex: 41 hectads. Patch: two generations, 20 Mar-31 May; 21 September
Belgrave Rd: 20 March-8 April (2)

49.083-084 Tawny Oak Tortrix/Tawny Birch Tortrix *Acleris ferrugana/notana*

Essex: 33 hectads.

Belgrave Rd: 13 March, 17 June. A new record of this species pair for the patch. Genital dissection required to take to species.

49.085-49.086 Elm Tortrix/White Birch Tortrix *Acleris kochiella/logiana*

Essex: 23 hectads. Patch (*A.kochiella*): 13 Feb-8 July

Overton Drive: 13 February

49.087 Lichen Tortrix *Acleris literana*

Essex: 25 hectads. Patch: scarce, 17 Mar-19 Apr

Belgrave Rd: 17 April

49.091 Yellow-spotted Tortrix *Pseudargyrotoza conwagana*

Essex: 47 hectads. Patch: sometimes common, 12 May-26 July. Best year: 30 in 2019 (Belgrave Rd)

Belgrave Rd: 12 June-7 July (4). **Photo** verification received.

49.093 Gold Cloak *Phtheochroa schreibersiana*

Essex: 1 hectad, 2 previous records.

Overton Drive: 26 May (2). A new record for the patch, and third Essex record.

49.101 Water Mint Straw/Loosestrife Straw *Phalonidia manniana/udana*

Essex: Water Mint Straw is **RDB** species, 1 hectad, 30 records. Loosestrife Straw is newly described species.

Belgrave Rd: 12 July. **Photo** verification received. A new record for the patch.



49.120 Common Marbled Straw *Aethes smeathmanniana*

Essex: 44 hectads. Patch: two generations, 21 May-25 June; 17 Aug-12 Sept

Overton Drive: 17 August; Belgrave Rd: 25 August

49.136 White-fronted Straw *Neochylis hybridella*

Essex: 48 hectads. Patch: 17 June-3 Sept

Belgrave Rd: 17 June.

49.138 Tawny-fronted Straw *Cochylis molliculana*

Essex: 47 hectads. Patch: 19 May-5 Aug

Overton Drive: 5 August. [Photo](#) verification received.

49.144 Oak Marble *Eudemis profundana*

Essex: 47 hectads. Patch: 17 June-3 Sept

Belgrave Rd: 29 June-18 July (2). [Photo](#) verification received.

49.156 Marbled Orchard Tortrix *Hedya nubiferana*

Essex: 49 hectads. Patch: 24 May-4 July. Best year: 17 in 2022 (Belgrave Rd)

Belgrave Rd: 2-29 June (12); Warren Wood/Temple: 21 June (5). [Photo](#) verification received.

49.161 Barred Marble *Celypha striana*

Essex: 48 hectads. Patch: 11 June-7 July

Warren Wood/Temple: 21 June (6); Belgrave Rd: 7 July. [Photo](#) verification received.



49.180 Pine Marble *Piniphila bifasciata*

Essex: 20 hectads, 74 records. Patch: 17 June-1 July

Belgrave Rd: 17-29 June (2). [Photo](#) verification received.

49.200 Cherry-bark Moth *Enarmonia formosana*

Essex: 26 hectads, 250 records. Patch: 18 May-21 Sept

Barclay Road: 6 June

49.215 Hedge Hook-wing *Ancylis achatina*

Essex: 46 hectads. Patch: 15-29 June

Belgrave Rd: 29 June. [Photo](#) verification received.

49.224 Bud Moth *Spilonota ocellana*

Essex: 48 hectads. Patch: 14 May-15 Aug

Belgrave Rd: 23 June-27 July (10). [Photo](#) verification received.

49.234 Brown Elm Tortrix *Epinotia abbreviana*

Essex: 27 hectads.

Belgrave Rd: 17-29 June (2). **Photo** verification received. A new record for the patch, and the first record for south-west Essex since at least 1989.



49.260 Mottled Oak Tortrix *Zeiraphera isertana*

Essex: 43 hectads. Patch: 11 June-21 July

Overton Drive: 11 June; Belgrave Rd: 17 June-21 July (11); Warren Wood / Temple: 21 June (2).

Photo verification received.

49.265 Hoary Tortrix *Eucosma cana*

Essex: 49 hectads. Patch: 10-30 June

Belgrave Rd: 29 June. **Photo** verification received.

49.269 Pied Tortrix *Eucosma campoliliana*

Essex: 36 hectads. Patch: 17 June-3 Aug

Belgrave Rd: 17 June-18 July (2)

49.275 Pale Lettuce Tortrix *Eucosma conterminana*

Essex: RDB species, 27 hectads.

Belgrave Rd: 18 July. **Photo** verification received. A new record for the patch.

49.283 White-cloaked Tortrix *Gypsonoma sociana*

Essex: 19 hectads, 67 records.

SoM, Wanstead Park: 15 June. **Photo** verification received. A new record for the patch.

49.292 Black Cloak *Notocelia cynosbatella*

Essex: 50 hectads. Patch: 3 May-3 June. Best year: 11 in 2020 (Belgrave Rd)

Belgrave Rd: 8-10 May (2)



49.294 Bramble-shoot Moth *Notocelia uddmanniana*

Essex: 50 hectads. Patch: 24 May-29 Aug.

Belgrave Rd: 2 June. Photo verification received.

49.298 Hawthorn Shoot Moth *Notocelia trimaculata*

Essex: 41 hectads.

Belgrave Rd: 17 June. Photo verification received. A new record for the patch.

49.295-49.298 Large Rose-shoot Moth/Hawthorn Shoot Moth/Rose Shoot Moth

Notocelia roborana / trimaculana / rosaecolana

Patch: 19 May-22 June

Belgrave Rd: 15 May-12 June (5). Simon Wood: “given the earlyish date, I think this is – as you say – Hawthorn Shoot Moth, *N. trimaculana*, but ideally I would like to see a side shot of these; this, *roborana* and *rosaecolana* can be quite similar and one photo like this without any sizes is very difficult to assess”.

49.313 Common Daisy Moth *Dichrorampha acuminatana*

Essex: 34 hectads. Patch: 7 May-18 Aug

Overton Drive: 18 August

49.325 Common Gorse Moth *Cydia ulicetana*

Essex: 25 hectads, 139 records. Patch: sometimes common around gorse, in two generations, 17 Apr-19 May; 28 July. Best year: 50+ in Brickpit, Wanstead Flats, 19 May 2021.

Wanstead Flats Brickpit: 26 April (several/many); Leyton Flats: 28 July (2nd gen)

49.338 Codling Moth *Cydia pomonella*

Essex: 52 hectads. Patch: 16 May-9 Sept. Best year: 52 in 2021 (Belgrave Rd)

Belgrave Rd: 23 June-12 August (26, inc 6 on 10/8). Photo verification received.



49.341 Marbled Piercer *Cydia splendana*

Essex: 48 hectads. Patch: 25 June-7 Sept.

Overton Drive: 17 July; Belgrave Rd: 21 July-3 September (4). Photo verification received.

49.342 Beech Mast Piercer *Cydia fagiglandana*

Essex: 25 hectads, 128 records. Patch: 24 June-17 July

Belgrave Rd: 18 July. Photo verification received.

49.343 Rusty Acorn Piercer *Cydia amplana*

Essex: 29 hectares, 198 records. Patch: 31 July-3 Sept
Overton Drive: 31 July. **Photo** verification received.

49.367 Acorn Piercer *Pammene fasciana*

Essex: RDB species, 38 hectads. Patch: 23 June-8 July
Belgrave Rd: 18 July. **Photo** verification received. New for the garden.

49.375 Regal Piercer *Pammene regiana*

Essex: 27 hectads, 122 records. Patch: 4 May-13 August
Pastures garden: 4 May; Barclay Rd: 18 July; Overton Drive: 27 July

49.376 Tawny Sycamore Piercer *Pammene aurita*

Essex: 28 hectads, 142 records. Patch: 18 July-12 August
Barclay Rd: 18 July; Overton Drive: 27 July

62.001 Bee Moth *Aphomia sociella*

Essex: 53 hectads. Patch: 7 May-31 July. Best year: 20 in 2020 (Belgrave Rd)
Overton Drive: 26 May; Warren Wood: 21 June; Belgrave Rd: 29 June



62.005 Lesser Wax Moth *Achroia grisella*

Essex: 35 hectads, 134 records. Patch: 8 July-10 Aug
Belgrave Rd: 10 August. **Photo** verification received. New for the garden.

62.006 Wax Moth *Galleria mellonella*

Essex: 47 hectads. Patch: 5 May-6 Sept
Belgrave Rd: 10 August. **Photo** verification received.

62.029 Oak Knot-horn *Phycita roborella*

Essex: 48 hectads. Patch: 12 May-16 Aug. Best year: 17 in 2023 (Belgrave Rd)
Belgrave Rd: 29 June-12 August (14)

62.033 Tufted Knot-horn *Acrobasis tumidana*

Essex: 20 hectads, 99 records.
Overton Drive: 5 August. A new record for the patch, and the first record for south-west Essex.

62.034 Beautiful Oak Knot-horn *Acrobasis repandana*

Essex: 43 hectads. Patch: 16 June-2 Sept. Best years: 10 in 2022 and 2023.

Overton Drive: 22 June; Belgrave Rd: 27 June-27 July (7). **Photo** verification received.



62.035 Grey Knot-horn *Acrobasis advenella*

Essex: 50 hectads. Patch: 13 June-7 Sept.

Belgrave Rd: 16-27 July (4)

62.038 Broad-barred Knot-horn *Acrobasis consociella*

Essex: 33 hectads. Patch: 13 June-29 July

Belgrave Rd: 18 July. **Photo** verification received.

62.048 Ash-bark Knot-horn *Euzophera pinguis*

Essex: 50 hectads. Patch: 30 May-26 Aug. Best year: 33 in 2020 (Belgrave Rd)

Belgrave Rd: 2 June-25 August (15). **Photo** verification received.

62.054 Twin-barred Knot-horn *Homoeosoma sinuella*

Essex: 48 hectads. Patch: 6 June-10 Aug.

Belgrave Rd: 17 June-21 July (8); Warren Wood: 21 June. **Photo** verification received.

62.062 Indian Meal Moth *Plodia interpunctella*

Essex: 26 hectads, 72 records. Patch: 4-18 July

Barclay Rd: 18 July

62.065 Blushed Knot-horn *Ephestia woodiella*

Essex: 43 hectads. Patch: 9 May-7 Sept

Belgrave Rd: 2 June-10 August (19)

62.072 Meal Moth *Pyralis farinalis*

Essex: 46 hectads. Patch: 14 Apr-7 Oct

Overton Drive: 27 June; Belgrave Rd: 16 July-3 September (4). **Photo** verification received.

62.074 Large Tabby *Aglossa pinguinalis*

Essex: 36 hectads, 231 records. Patch: 12 June-8 July

Barclay Rd: 12 June

62.075 Gold Triangle *Hypsopygia costalis*

Essex: 51 hectads. Patch: 3 June-2 Oct. Best year: 22 in 2019 (Belgrave Rd)
Barclay Rd: 3 June; Belgrave Rd: 29 June-2 October (12)



62.076 Double-striped Tabby *Hypsopygia glaucinalis*

Essex: 49 hectads. Patch: two generations, 18 June-26 July; 5 Oct
Barclay Rd: 29 June. Belgrave Rd: 16 July. **Photo** verification received.

62.077 Rosy Tabby *Endotricha flammealis*

Essex: 54 hectads. Patch: 18 June-16 Aug. Best year: 58 in 2019 (Belgrave Rd)
Belgrave Rd: 29 June-27 July (23). **Photo** verification received.

63.006 Mint Moth *Pyrausta aurata*

Essex: 53 hectads. Patch: two generations, 8 May-23 June; 24 July-16 Sept. Best year: 37 in 2020 (Belgrave Rd)
Belgrave Rd: 12 May (1), 17-23 June (2); 27 July-1 September (16, inc 9 on 10/8)



63.018 Elder Pearl *Anania coronata*

Essex: 49 hectads. Patch: 20 June-12 Sept. Best year: 15 in 2020 (Belgrave Rd)
Belgrave Rd: 16-27 July (3)

63.025 Small Magpie *Anania hortulata*

Essex: 52 hectads. Patch: 25 May-16 July
Belgrave Rd: 12 June



63.031 Rusty-dot Pearl *Udea ferrugalis*

Essex: 49 hectads. Patch: 9 Aug-15 Nov
Belgrave Rd: 31 August-16 September (2). **Photo** verification received.

63.032 Rufous Pearl *Udea fulvalis*

Essex: 2 hectads, 15 records.
Belgrave Rd: 16 July. **Photo** verification received. A new record for the patch, and the third record for Essex.



63.037 Garden (Olive) Pearl *Udea olivalis*

Essex: 47 hectads. Patch: 18 May-23 June

The Temple, Wanstead Park: 21 June

63.038 Mother of Pearl *Pleuroptya ruralis*

Essex: 52 hectads. Patch: often day flying as well as attracted to light, 23 June-14 Sept. Best year: 24 in 2020 (Belgrave Rd).

Belgrave Rd: 12 July

63.054 Box-tree Moth *Cydalima perspectalis*

Essex: 53 hectads. Patch: 17 May-8 Nov. Melanic form first appeared in 2020 (9/46). Best year: 146 in 2019 (Belgrave Rd).

Belgrave Rd: 29 June-12 July (3); 25 August-4 October (4). **Photo** verification received.

All years, Belgrave Rd:

2015: first recorded

2016: 6 July ->

2017: 18 June ->

2018: 11 June ->

2019: 146, 15 June-20 July; 13 August-27 September; peak 21 on 2 September

2020: 47, 2 June-4 August; 26 August-20 September; peak 10 on 16 September

2021: 29, 23 June-12 August; 3 September-8 November; peak 5 on 24 September, 26 October

2022: 25, 17 May-11 June; 21 August-3 October

2023: 39, 17 May-11 July; 20 July-14 September; peak 11 on 3 September

2024: 7, 29 June-12 July; 25 August-4 October



63.057 Garden Pebble *Evergestis forficalis*

Essex: 48 hectads. Patch: 14 May-29 Aug

Overton Drive: 22 August; Belgrave Rd: 25 August

63.064 Common Grey *Scoparia ambigualis*

Essex: 46 hectads. Patch: 1 June-15 July. Best year: 32 in 2022.

Belgrave Rd: 17 June

63.066 Brown-spot Grey *Scoparia pyraella*

Essex: 37 hectads. Patch: 31 May-4 July

Belgrave Rd: 8-29 June (6)

63.067 Tawny Grey *Eudonia lacustrata*

Essex: 44 hectads. Patch: 4 June-26 July

Belgrave Rd: 23 June-16 July (6); Warren Wood/Temple: 21 July

63.074 Garden Grey *Eudonia mercurella*

Essex: 52 hectads. Patch: 29 May-16 Aug. Best year: 71 in 2019 (Belgrave Rd).

Belgrave Rd: 29 May-10 August (18). Photo verification received.

63.080 Garden Grass-moth *Chrysoteuchia culmella*

Essex: 54 hectads. Patch: 27 May-11 Aug

SSSI, Wanstead Flats: 8 June; Belgrave Rd: 12 June-12 August (31, inc 12 on 29/6).

Photo verification received.

63.081 White-banded Grass-moth *Crambus pascuella*

Essex: 48 hectads. Patch: 31 May-7 Sept. Best year: 29 in 2022 (Belgrave Rd).

Belgrave Rd: 23 June-27 July, 7 September (13). Photo verification received.



63.086 Hook-streak Grass-moth *Crambus lathoniellus*

Essex: 52 hectads. Patch: 12 May-29 June

Belgrave Rd: 12 May-2 June (2). Photo verification received.

63.090 Barred Grass-moth *Agriphila inquinatella*

Essex: 31 hectads. Patch: 21 July-28 Aug

Belgrave Rd: 21 July-25 August (13, inc 7 on 12/8). Photo verification received. The best year ever locally.

63.095 Chevron Grass-moth *Agriphila geniculea*

Essex: 51 hectads. Patch: 3 July-17 Sept. Best year: 299 in 2019 (Belgrave Rd).

Overton Drive: 22 August; Belgrave Rd: 25 August-7 September (24, inc 12 on 31/8)

63.099 Pearl Grass-moth *Catoptria pinella*

Essex: 41 hectads. Patch: 29 June-14 Aug

Belgrave Rd: 16-27 July (7). Photo verification received.



63.102 Chequered Grass-moth *Catoptria falsella*

Essex: 49 hectads. Patch: 14 June-7 Sept. Best year: 12 in 2020 (Belgrave Rd).

Belgrave Rd: 17 June-29 August (17). Photo verification received.

63.119 Marbled Fern *Musotima nitidalis*

Essex: 28 hectads, 172 records.

Belgrave Rd: 2 June, 12 July. Photo verification received. A new record for the patch.

(Also, Forest Gate: 7 September)

